

Rotary Mower
Faucheuse
Type ZA

11 08 2011

E Instruction manual, page 3 and following
 Spare parts, page 16 and following

F Pièces de rechange, page 16 et suivant

Instruction Manual - Spare Part List / Livre d'Instruction - Pièces de Rechange

Perfect ZA

11 08 2011

Contents :

| | | |
|---|--|----|
| 1 | Instructions | |
| A | General..... | 3 |
| B | Identification and terminology | 3 |
| C | Assembly instructions | 3 |
| D | P.T.O. adjustment and lubrication | 5 |
| E | Preparation for service | 6 |
| F | Driving speed | 7 |
| G | Break in period | 7 |
| H | Maintenance and lubrication | 8 |
| I | Gearbox | 8 |
| J | Bearing and Belt conversion chart | 10 |
| K | Belt tension determination | 11 |
| L | Cutting blades | 11 |
| M | Attaching the tractor | 12 |
| N | Off season storage | 12 |
| O | Accessory parts | 13 |
| | EG Declaration of Conformity for machinery | 14 |

2 Schematic assembly drawings, part numbers and description /

Dessins schématiques avec numéros et désignation des pièces

| E | F | |
|---------------------------------------|--|----|
| • Assembly ZA-270 / ZA-300 | Vue d'ensemble ZA-270 / ZA-300 | 16 |
| • Assembly ZA-340 / ZA-380 | Vue d'ensemble ZA-340 / ZA-380 | 18 |
| • Gearbox | Boîte de renvoi d'angle | 20 |
| • Swing arm | Disque mobile | 22 |
| • Rear Wheel 6.00 x 9 | Roue Arrière 6.00 x 9 | 24 |
| • P.T.O. shaft | Cardan de transmission | 26 |
| • Bearing housing – Rotor shaft | Boîte – Arbre | 28 |
| • Bearing housing – Rotor shaft | Boîte – Arbre | 30 |
| • Bearing housing – Rotor shaft | Boîte – Arbre | 32 |
| • Jockey pulley | Poulie de tension | 34 |
| • Bearing housing – Rotor shaft | Boîte – Arbre | 36 |
| • Jockey pulley | Poulie de tension | 38 |
| • Front swivel wheel 4.00 x 4 | Roue pivotante 4.00 x 4 | 40 |
| • Feeler bar (optional) | Tâtonneur mécanique (option) | 42 |
| • Swing away blades (optional) | Couteaux oscillants (option) | 44 |
| • Raisable Swingarm..... | Disque Mobile Réglable d'Angle (option)..... | 45 |
| • Hydraulic Feeler Bar | Tâtonneur mécanique – hydrauliquement (option) . | 46 |

C A U T I O N !

- Never walk close to the rear of any mower when in operation.
- Never touch the machine before the blades have stopped rotating.
- Never remove guards when in operation.
- Besides the tractor driver no one should be near the mower when in operation. The driver should never leave the tractor seat before disengaging the P.T.O. to the mower.

I M P O R T A N T !

THIS MACHINE IS PROPERLY USED IN AGRICULTURE FOR CUTTING GRASS OR LIGHT BRUSH.

THEREFORE AVOID UNEVEN TERRITORIES AND ROCKS OR ANY OTHER SOLID OBJECTS UNDER THE MACHINE.

A. GENERAL

- (1.) Fill in model and serial number in manual.
- (2.) Read the instructions before operating the machine.
- (3.) When ordering spare parts, please indicate model and serial number of the machine, as well as quantity plus part number and name of parts required.
- (4.) Assembled parts are recognizable by a mark (x, +, .) before the detail number.

B. IDENTIFICATION AND TERMINOLOGY

To clarify the letters and numbers designated to a mower:

- (1.) The "S" in front of the number indicated a swinging arm assembly (page 23) is attached to the mower. With "SA" as prefix there is no swinging arm.
- (2.) The numerical number designates the size of the mower, as related to the swath width in centimeters.
- (3.) The "ZA" following the number indicates that the mower is a trail model as opposed to the 3 point hitch models which have no letters following the number.
- (4.) Most important, the numbers on the end of the parts box must correspond with the serial numbers on the mower. This is the best way to assure that you have all parts belonging to the mower in question.

C. ASSEMBLY INSTRUCTIONS

- (1.) Stand machine on its edge, with aid of fork lift or chain fall hoist, preferably with draw bar mounting bracket on the floor, (the front or lead edge of the machine). Install the three or four blades on the main body of the machine, prior to the addition of extra weight of the other parts.
- (2.) Using long bolts (page 28, item 21), and long blades (page 28, item 20) insert bolts through holes in the blade, the bar (page 28, item 19) and tighten into position on each of the 3 or 4 hubs, (page 28, item 15) with disc spring (page 28, item 18) and locknut (page 28, item 17).
These bolts must be as tight as possible and the bar must be

between the blades and the rotor hub. A 15/16" wrench and a 3 foot piece of pipe, for added leverage, will secure these bolts. (NOTE: Bar, page 28, item 19, only applicable to 380 and 300 models, CAUTION: When installing the blades always wear leather gloves, because of the sharp cutting edges.

- (3.) Mount pneumatic tires on the arm links, making sure to have valve stem on the outside and attach the adjusting links to the arms (see page 15, figure No.1 and 3).
- (4.) With machine down in a flat position once again, mount the pneumatic tire assemblies to the chassis, being sure that the hubs of these assemblies are facing away from each other (see page 15 fig. No. 1 and 3).
- (5.) Attach the swivel wheel assembly to the opposite side of the unit. (page 15, or page 16, item 12; or page 19, item 12).
- (6.) Locate the rest jack (page 16, item 30; or page 19, item 31), on the opposite end of the mower to that of the swivel wheel.
- (7.) With the mower off the floor, by means of its own wheel, and being sure there is no obstruction beneath the unit so as to prevent the blades from turning, remove the top cover guards.
- (8.) Remove the 3 bolts, (page 20, items 27 thru 30), from the gearbox mounting plate, and remove the adjusting bolt, (page 16 or 19, item 23) from the mounting frame for holding the gearbox.
- (9.) Place the gearbox in the mounting bracket as far forward as possible with P.T.O. drive spline facing lead edge of mower.
- (10.) Place all belts in their proper location on the gearbox pulley, (see pages 16 and 19.) Being sure the gearbox is located between the flanges on the mounting bracket.
- (11.) Replace adjusting bolt, (page 16 or 19, item 23), in bracket and tighten gearbox until desired belt tension is achieved and lock bolt securely with nut (page 16 or 19, item 24.) Be careful to make certain that the end of the adjusting bolt (page 20, item 41) enters the slot provided for it on the gearbox plate (page 20, item 25). NOTE: Deflect belt 5/16" using 12 pounds minimum and 14 pounds maximum. (See K).
- (12.) Replace the 3 bolts, (page 20, items 27 inclusive 30,) in their proper location, in the gearbox plate and tighten thoroughly.
- (13.) Check the oil level in the gearbox, by removing oil level plug, (page 20, item 12), in the back plate (page 20, item 10) of the gearbox. A small amount of oil should flow from this oil level hole when the machine is in a level position.

- (14.) Remove the cover guard on the swinging wheel (page 23, item 1).
- (15.) Turn entire unit over and install the blade on the rotor hub, using the two short bolts (page 23, item 59). There is no re-inforcing bar supplied with this blade assembly on any models. Be sure these bolts are tight using lock nuts and disc springs. (page 23, items 56 and 57.)
- (16.) Remove the two bolts from the frame of the swinging arm, (page 23, item 18) and install on machine. It is adviseable to unhook the spring attached to the mounting house, (page 23, item 15), to make the installation of the swinging arm easier.
- (17.) Secure the swinging arm by means of the 2 bolts, making certain that you insert the bolts from the bottom of the housing (page 23, item 10) with the nut on the top, otherwise, should you have it reversed the bolt and the nut will bend on the frame of the machine and prevent the wheel from swinging freely.
- (18.) To install the V-belt, on the swinging arm, loosen the bolts, (page 23, item 32) on each side of the rotor housing, (page 23, item 38) and remove both nuts from the adjusting bolt (page 23, item 51).
- (19.) Push the entire swing arm assembly as far forward as possible, install V-belt, replace the nuts on the adjusting bolt and tighten to give desired belt tension. When this is achieved, lock both nuts on bolt (page 23, item 51) firmly and tighten the nuts and bolts (page 23, item 32) on either side of the housing. Deflect belt $\frac{1}{2}$ " using minimum 12 pounds, maximum 14 pounds pressure. (See K.)
- (20.) Replace cover guard and affix the tension spring to its original place on the housing.

D. P.T.O. ADJUSTING AND LUBRICATION

It goes without saying and we cannot emphasize strongly enough, the importance of having the P.T.O. shaft fitted to the proper length. As the machine is normally designed to be drawn by the 3 point hitch draft bar, on the hydraulics, it may not be necessary to shorten the shaft. However, if the machine is pulled by the draw bar of the tractor, which is normally shorter, the P.T.O. shaft must be shortened. In either case, there must be at least 6" of "telescope" when the mower is in a straight line behind the tractor.

Care should be taken in shortening P.T.O., and we suggest the following cautions:

- (a.) Both inner and outer steel tubes and guard tubes must be cut in equal lengths, to the dimension required, to reduce the shaft length.
- (b.) The inner and outer guard tubes and the outer steel tubes, can be cut with a hacksaw, after which, all rough edges on the exterior and the interior surfaces of the cut sections, must be bevelled, cleaned and greases, prior to use.
- (c.) The inner steel tube is hardened steel and can be cut most efficiently with a cutting torch or steel cutting blade. After cutting, only the exterior surface of the cut section needs to be bevelled and any rough sections on the interior surface cleaned with a steel file. All metal saw dust, should then be cleaned off and surfaces greased prior to inserting tube into the outer section.
- (d.) It is not only necessary to keep the steel tube well greased to insure proper telescoping, but also, that they be washed clean periodically to remove dirt and accumulated contaminated grease. (This is most important when operating in dusty areas).
- (e.) P.T.O. Grease and Oil
See page 27-16-19
 Arrows and numbers followed by "h" are grease points with number of working hours between greasings.

E. PREPARING FOR SERVICE

The machine is designed for tractor P.T.O. speed of 540 RPM.

During operation and transport the front of the machine is carried by the tractor 3 point linkage (page 15, fig. 1, 2 and 3). The S-270-ZA/SA-215-ZA and S-300-ZA/SA-245-ZA models are transported breadthwise (page 15, fig. 1). The S-340-ZA/SA-285-ZA and S-380-ZA/SA-325-ZA models can also be transported lengthwise. In such case, the 2 wheels are put on either side of the machine (page 15, fig. 2).

Page 15, fig.3 shows working in maximum offset position. It is advised to disconnect the P.T.O. shaft during transport to avoid damages. The entire guarding of the P.T.O. shaft must be secured against rotating by fixing the little chain to the nearest rubber clamp (page 16 and 19, item 32).

Cutting height is adjustable from 4 to 25 cm. (1½" to 10") by resetting the pin (page 24, item 22) in another hole of the height adjusting link (page 24, item 20). The swivelling front wheel must just touch the ground to support the far end of the mower when in offset position.

To operate properly the front edge (pages 16 and 19, item "A") should be 2" lower than the rear edge (pages 16 and 19, item "B"). If this is not done much more power will be required as in effect you are cutting the grass twice, mowing will be ragged and there is less danger of bending the cutting blades in rough terrain.

F. DRIVING SPEED

The recommended driving speeds are, depending on plantation and circumstances:

- (1.) For mowers without swinging arm: between $2\frac{1}{2}$ - 5 m.p.h.
- (2.) For mowers with swinging arm : between $1\frac{1}{2}$ - $2\frac{1}{2}$ m.p.h.

G. BREAK IN PERIOD

- (1.) It is important that the belts on the gearbox (pages 16 and 19, item 22) be checked and tightened, especially during the first 2 hours of operation. Periodic check on these belts is highly recommended, due to the fact, that the blades are designed to cut best at high speeds, and belts must therefore be tight at all times according to specifications (See K.)
Bolt (page 20, item 41) has different mountings in the gearbox mounting bracket. Therefore the gearbox can be easily adjusted for any belt tensioning.
- (2.) The belt driving the spinning wheel blade, (page 23, item 4) should also be tightened, in accordance with the suggestion No. 1.
To adjust same (see page 23) - Loosen bolts (page 23, item 32) - (2) - one on each side of housing No.38. Adjust tension by tightening nut (page 23, item 17), end of adjusting bolt (page 23, item 51).
- (3.) The balance of the belts are spring tightened (page 35, item 13 and 14; page 29, item 10 and 11) and although the belts must be kept tight according to specifications, care should be given "NOT" to have too much tension on the tightening springs. These springs serve a dual purpose. Not only do they keep the belts tight, but they also absorb shock when the blades hit a solid object. Belt deflection $\frac{1}{2}$ ", min. 11, max. 14 pounds pressure.
- (4.) The mower is designed to be driven at a P.T.O. speed of 540 RPM's. Anything less than 540 RPM's produces a poor job and is hard on the mower.

H. MAINTENANCE AND LUBRICATION

At regular intervals check the following points:

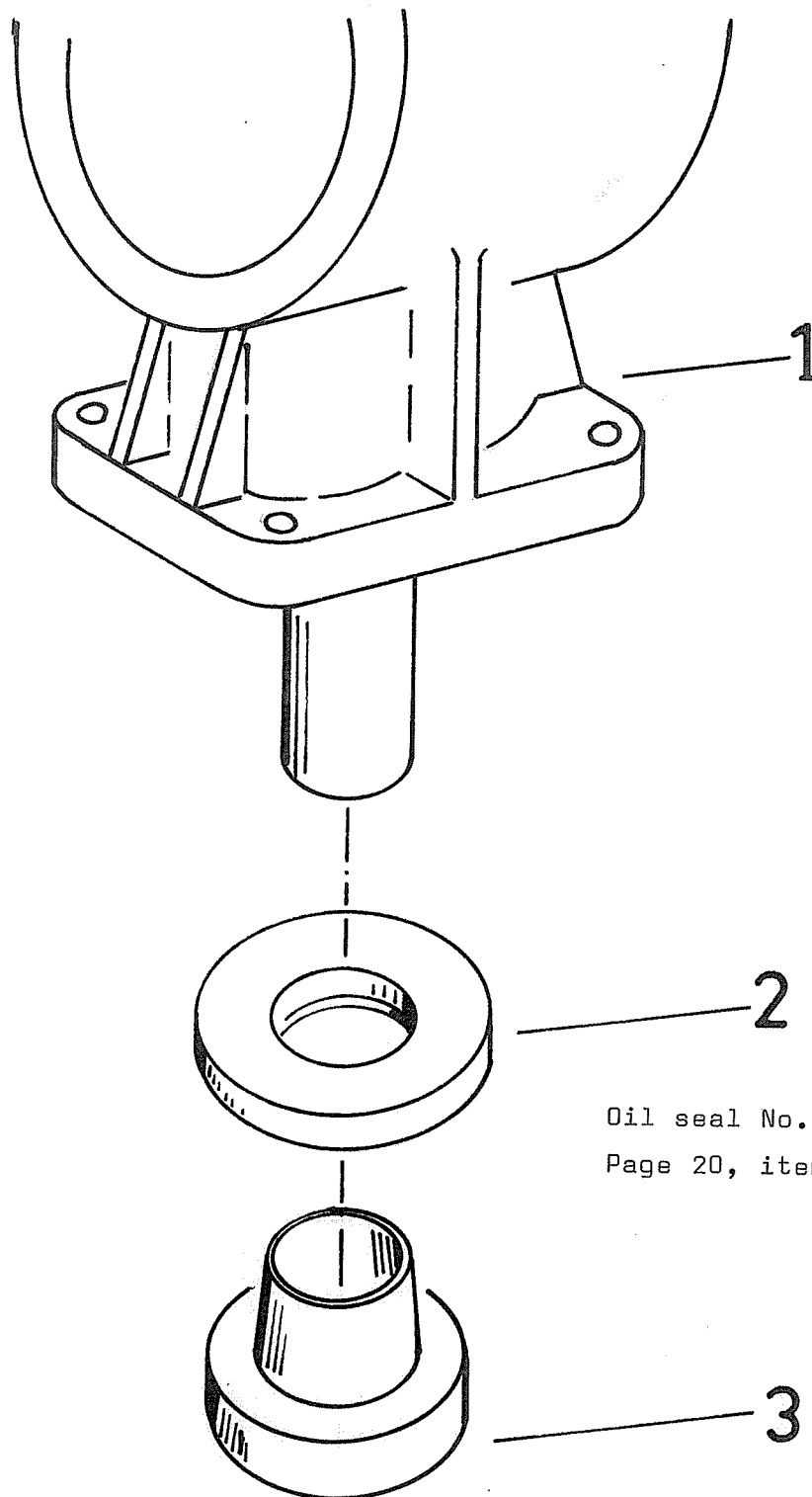
- (1.) Oil level in gearbox. This is correct when the oil just reaches the plug hole, (page 20, item 12). Check daily - fill to proper level.
- (2.) Breather-cap (page 20, item 16) on gearbox should be free of blockage, in order to avoid excessive pressure in the gearbox which could damage the oil seals. Clean by blowing through from the inside.
- (3.) All rotor shafts - grease according to instruction pages 16 and 19. The following grease qualities are recommended by the grease manufactures:
 - Shell : Darina 2
 - Esso : Andok B
 - Gulf : High Temperature Grease
 - B.P. : RBB 2
- (4.) Tension of V-belts. Adjust after the first two hours and again after the working hours and further at regular intervals. Adjust belts according to specifications (See K.)
- (5.) Pressure of pneumatic tire. 600 x 9 approx. $4\frac{1}{2}$ KG/cm² (65 PSI).
- (6.) Wheel bearings:
 - a) Rear wheel 600 x 9: every three months of operation.
 - b) Front swivel wheel 400 x 4: every eight hours of operation.Use a good quality ball bearing grease (Gulf Crown Grease Nr.2 or equivalent).
- (7.) P.T.O. shaft (refer to Section "C").
- (8.) Swing arm tire. Check if steel wire rope is still tight enough and restrain if necessary.

IMPORTANT!

Keep oil, and grease away from V-belts. Wipe off excess.

I. GEARBOX

- (1.) Renew oil after the first ten working hours. Then every 100 working hours, but at least once a season. Handle as follows: take gearbox off. Remove breather (page 20, item 16) and turn gearbox upside down in order to clean all settlements over the shaft bearings. Remove magnetic plug (page 20, item 22) and drain oil. Clean with diesel oil which will remove all the dirt from the bearing by draining it completely out of the gearbox. Then refill to required oil level (0,4 ltr. = approx. $\frac{3}{4}$ pint.)



Oil seal No. 2048
Page 20, item 36

Installation tool No. 11414

For replacement of oil seal No. 2048 (det. 36, page 20) handle as follows:

1. Remove defect oil seal (item 2)
2. Place new oil seal (item 2) round installation tool (item 3).
3. Slip installation tool with oil seal over gearbox shaft.
4. Tap oil seal in correct position by means of light hammer.
5. Remove installation tool.

Always use the same oil: SAE 90 gearoil is advised, or SAE 120 in extremely warm climates.

- (2.) Correct oil level: Oil level plug (page 20, item 12) is located on the rear cover plate (page 20, item 10) towards the bottom.
CAUTION: Fill only to the proper level.
- (3.) When installing new spiral bevel gears in the gearbox, the twist side play (tooth-play) may normally not exceed 0,10 to 0,20 mm.
- (4.) Special instruction for installation of oil seal (page 20, item 36) See page 10, item 2 for instructions and drawing. The special oil seal installation tool (page 10, item 3) of drawing is available as part number 11414.

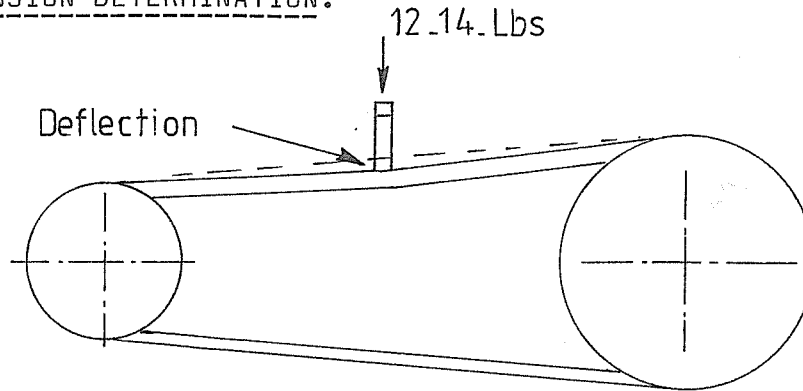
IMPORTANT!

Keep oil and grease away from V-belts. Wipe off excess.

J. BEARING AND BELT COVERSION CHART:

| <u>VAN WAMEL PART NUMBER</u> | <u>BEARINGS S.K.F. Part No.</u> | <u>SECTION LENGTHS V-belts</u> |
|------------------------------|-------------------------------------|------------------------------------|
| 1761 | 6002-2RS | |
| 1764 | 6006-2RS | |
| 1796 | 6207-Z | |
| 1802 | 6205-2RS | |
| 1911 | 30206 | |
| 1913 | 30208 | |
| 2024 | 6015-Z | |
| 2713 | 30205 | |
| 2860 | not avail. U.S. | |
| 2032-C-56 (340 ZA)(270-ZA) | | C-56 |
| 2035-C-60 (380 ZA)(300-ZA) | | C-60 |
| 2040-C-85 (swing arm) | | C-85 |
| 2045-C-90 (380 ZA)(300-ZA) | | C-90 |
| 2070-C-83 (340 ZA)(270-ZA) | | C-83 |

K. BELT TENSION DETERMINATION.



Using a 1/2"x6" bolt or similar test rod, on which the feel for applying 12 to 14 lbs. pressure has been obtained by pressing on a bathroom or kitchen scale, depress the belt with this 12 to 14 lbs. of pressure. For the correct belt tension the deflection of the belt must be:

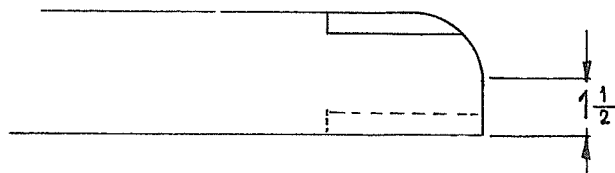
5/16" for V-belts No.2032-C-56 and No.2035-C-60

1/ 2" for V-belts No.2040-C-85 and No.2045-C-90 and No.2070-C-83

If using a belt tension testing device, please follow the manufacturer's instructions.

L. CUTTING BLADES

All cutting blades are sharpened on both edges on each side. Blades should be reserved as shown in figure below.



M. CONNECTING MOWER TO TRACTOR: ZA Models

- (1.) We strongly recommend the use of the tractor 3 point hitch drawbar for this purpose in order to obtain the proper cutting height and the correct height of the lead mower edge in relation to the rear one, and to obtain maximum offset or flexibility in mowing. Using this drawbar also allows the P.T.O. universal to operate at better angles.
- (2.) The 3 point hitch control level should be fixed with a stop, so as to prevent the accidental lifting of the 3 point hitch drawbar too high damaging the P.T.O. shaft.
- (3.) Position the mower drawbar on the 3 point hitch drawbar in order to allow the tractor to ride clear of the trees, so that the fruit is not bruised and yet allows the swinging arm assembly to reach the tree trunk.
- (4.) With the mower and tractor connected in their desired position, if the tractor P.T.O. stub shaft is lined up outside the mower gearbox, then mowing turns should be made to the RIGHT. Conversely, if the P.T.O. stub shaft is lined up inside the gearbox (or on the tree side) then turns at the end of the rows should be to the LEFT.
- (5.) Should it be necessary to turn against the short angle of P.T.O. universal at the tractor end, it is recommended to disengage the tractor P.T.O. before turning to eliminate the risk of damage to the P.T.O. universals.
- (6.) Be sure P.T.O. shaft is the proper length.
- (7.) Lengthwise transport (see page 15, fig.2)
The two rubber tired wheels have to be mounted in the transport position and the drawbar is mounted to the end of the machine (Page 19). In order to change the machine over the road transport or mowing position, the special jack (page 19, item 41) is supplied with each of those mowers.

N. OFF SEASON STORAGE

To take the mower out of service for a longer period handle as follows:

Release tension of V-belts, clean gearbox as mentioned, sharpen cutter blades or renew, check which parts have to be replaced, wash and clean the machine completely.

Lubricate the bearings and store it in a dry place.

O. Accessory Parts

- Mechanically feeler bar; see page 42 - 43, item 18 – 39
- Raisable arm for swing arm; see page 44 – 45, item 1- 19
- Swing away blades; see page 44 – 45, item 22 – 27
- Mechanically – hydraulic feeler bar; see page 46 - 47

EG-Declaration of Conformity for machinery

in accordance with the Machine Directive II A

We **Van Wamel B.V.**
Energieweg 1
6658 AE Beneden-Leeuwen
The Netherlands

Tel. : + 31 487 592944
Fax : + 31 487 592970
Email : perfect@vanwamel.nl

Declare under our sole responsibility that the following product

'PERFECT' rotary mower model ZA

Model name :

Serial number :

Date of manufacturing :

to which this declaration relates, is in compliance with the relevant harmonised standards:

NEN-EN-294, NEN-EN-349, NEN-EN-745,
NEN-EN-811, NEN-EN-12100-1, NEN-EN-12100-2

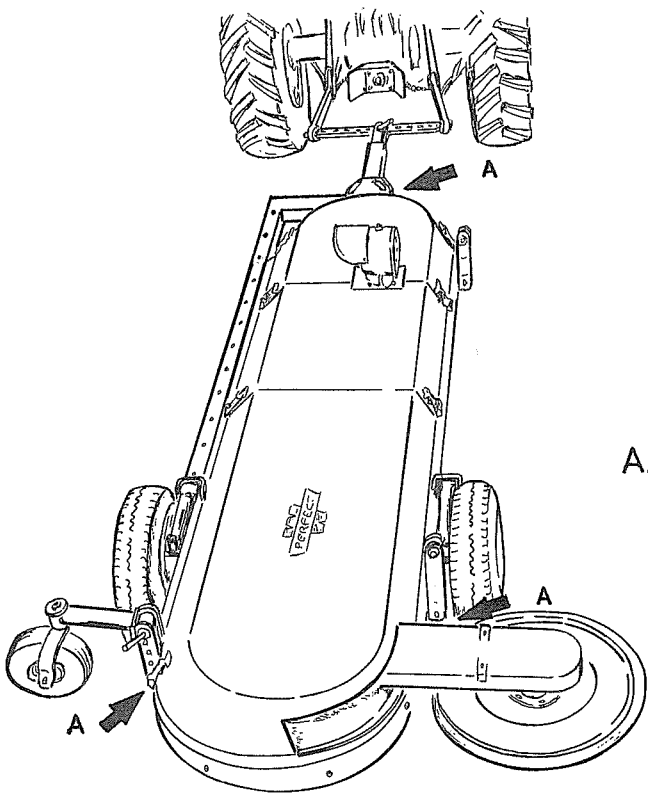
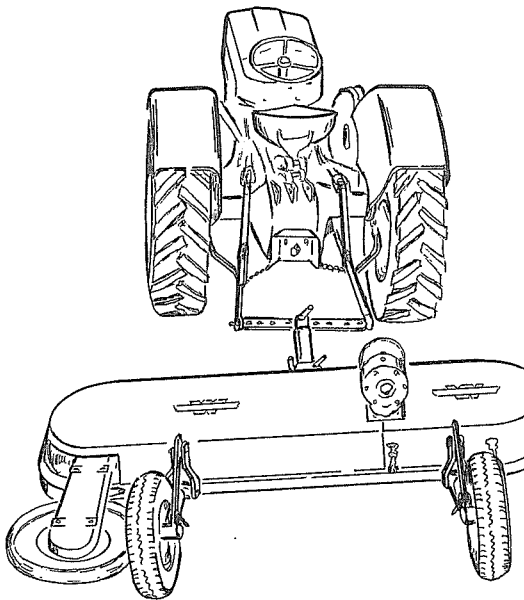
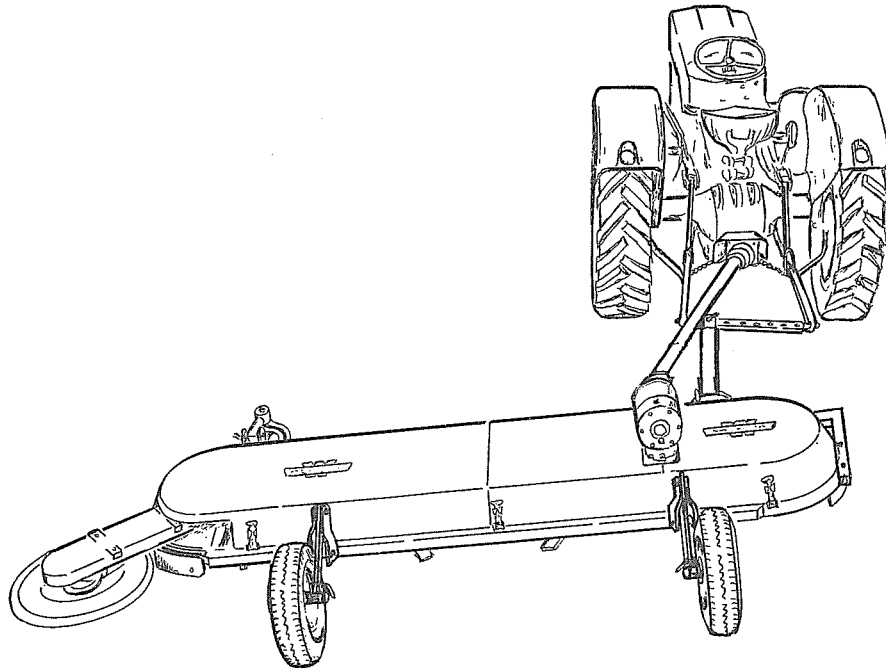
as well to the basic safety and health requirements of

Machinery Directive 89/392/EEC, as amended,
91/386/EEC, 93/44/EEC, 93/68/EEC, 98/37/CEE and 2006/42/EC

Beneden-Leeuwen, January 2011



F.M.M. Van Wamel
Managing Director



A. Jack holders
Positions pour cric

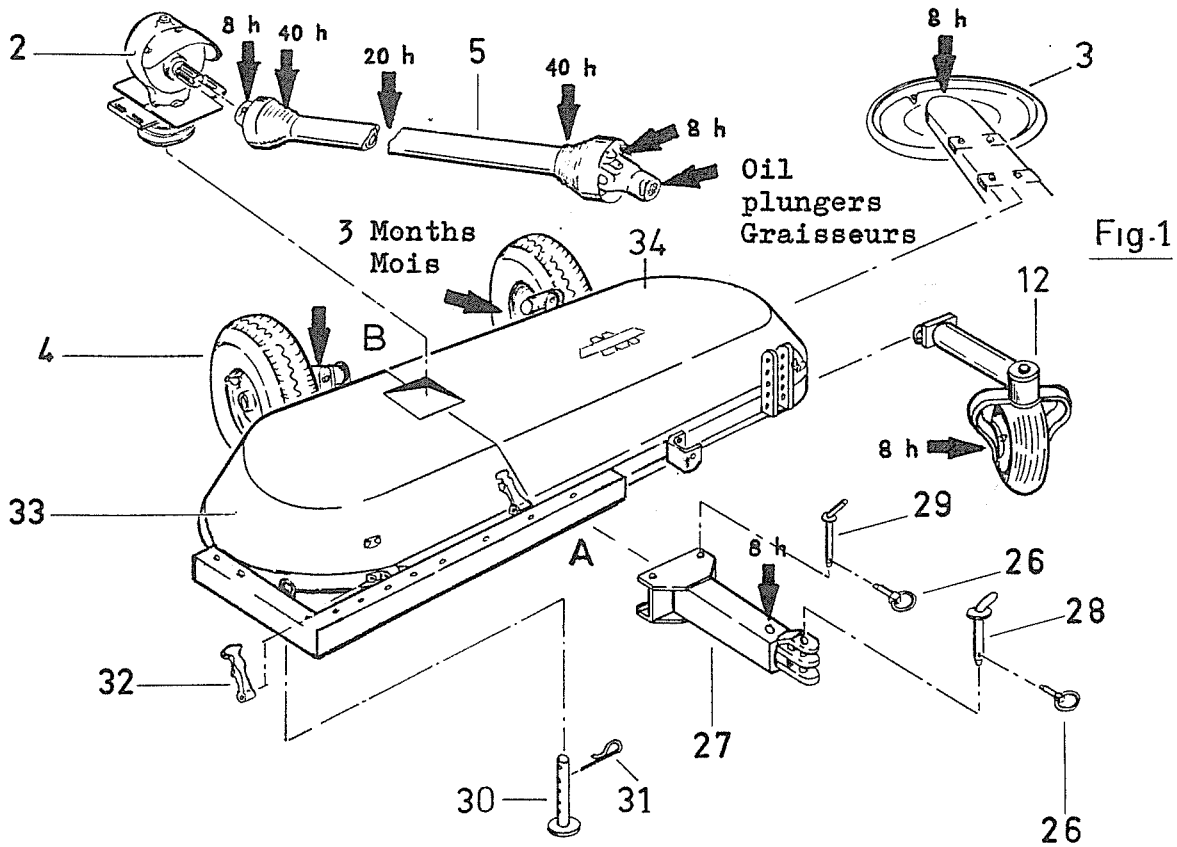


Fig-1

Poulie sous boîtier d'engrenage
gearbox pulley

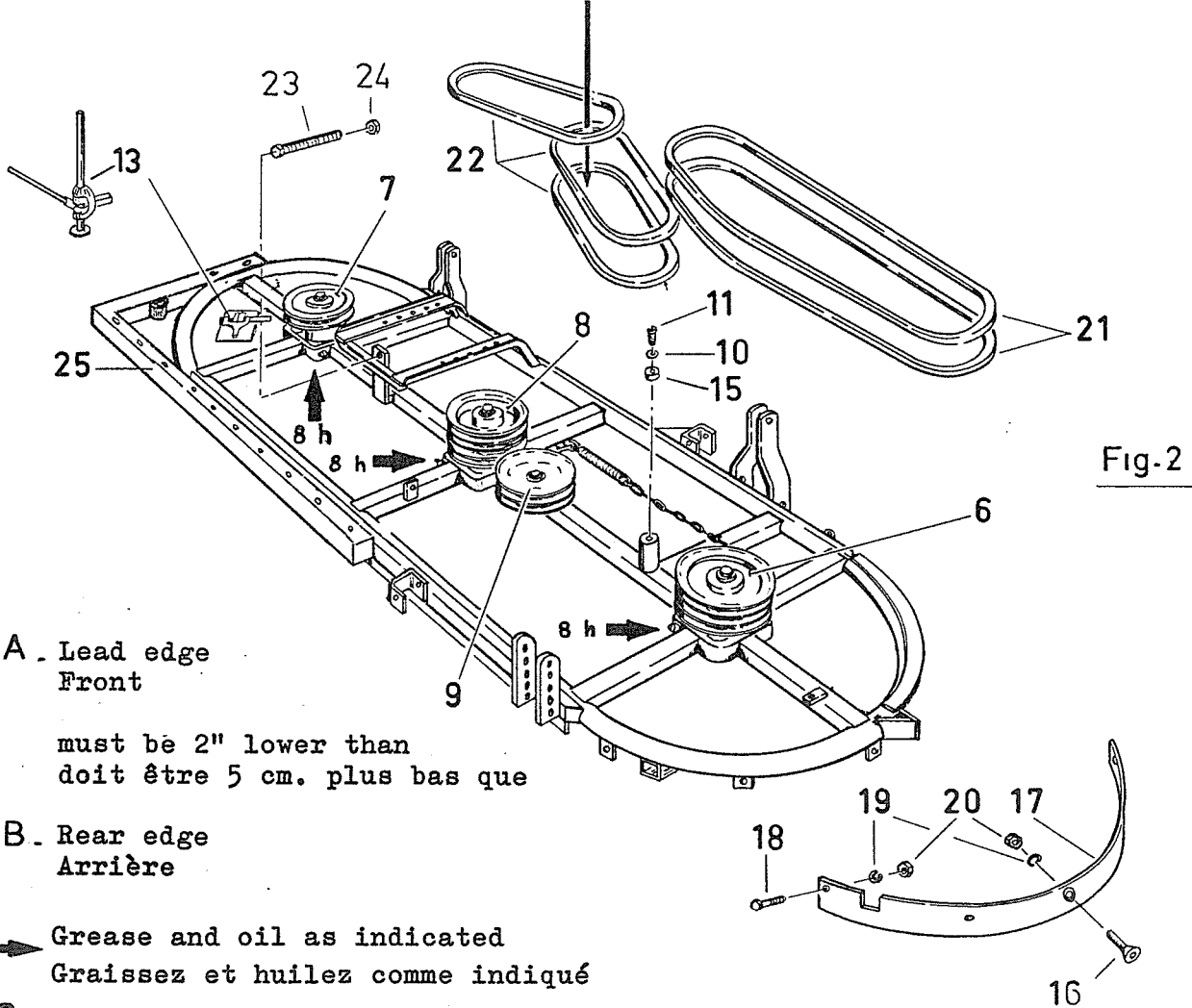


Fig-2

A. Lead edge
Front

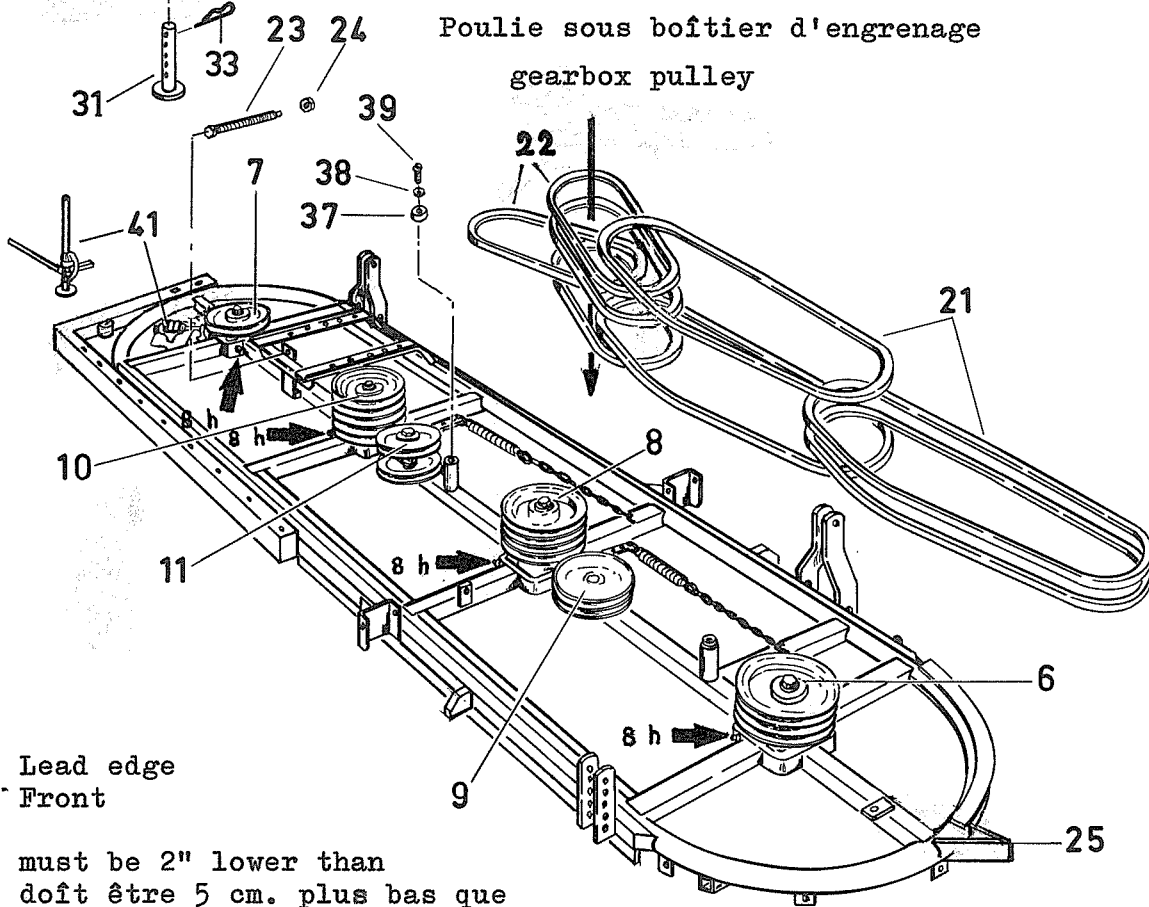
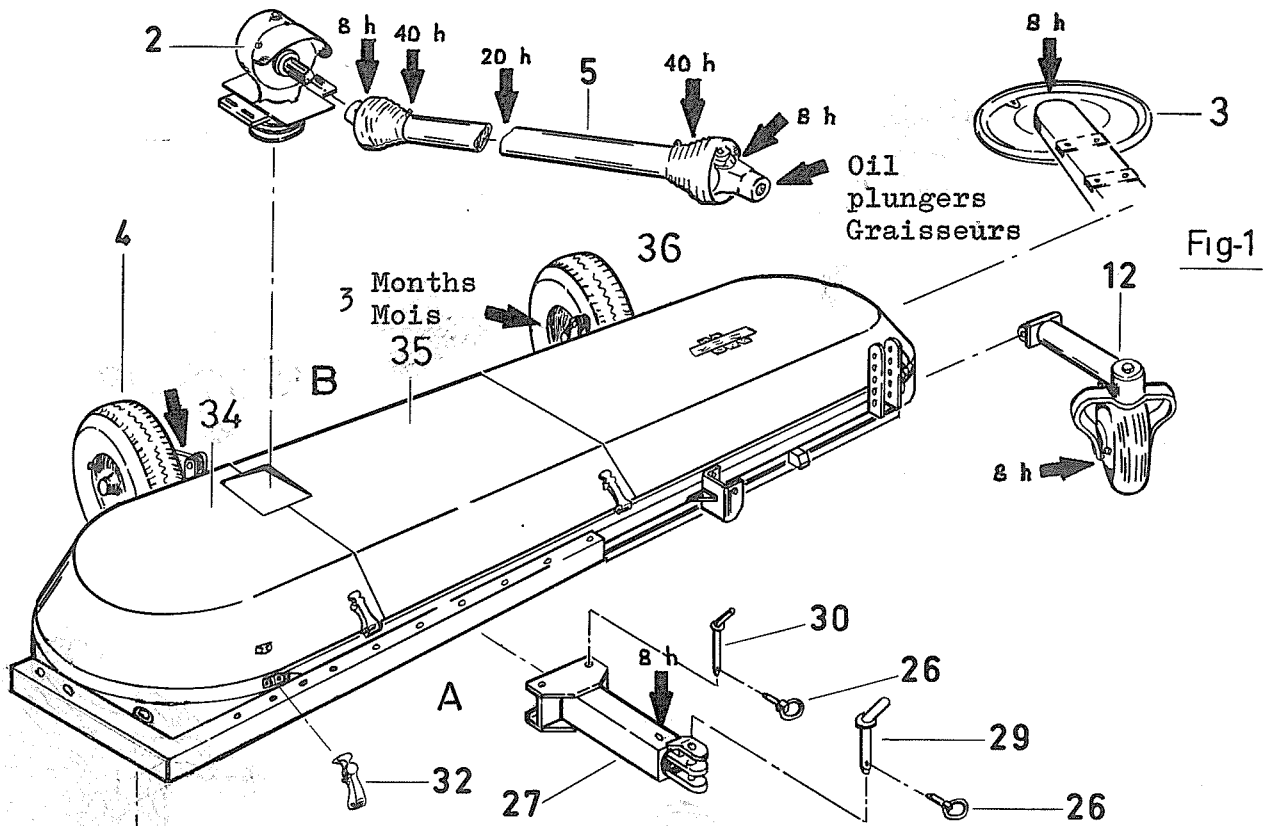
must be 2" lower than
doit être 5 cm. plus bas que

B. Rear edge
Arrière

→ Grease and oil as indicated
Graissez et huilez comme indiqué

| Det. Nomenclature | | | Qty. | ZA-270 No. | ZA-300 No. |
|-------------------|--------------------|-----------------------|------|---------------|---------------|
| 2 | Gearbox | Transmission | 1 | Page 20 | Page 20 |
| 3 | Swinging wheel | Disque mobile | 1 | Page 23 | Page 23 |
| 4 | Wheel assy | Roue | 2 | Page 24 | Page 24 |
| 5 | P.T.O. Shaft | Arbre de cardan | 1 | Page 27 | Page 27 |
| 6 | Rotor | Arbre | 1 | Page 28 | Page 28 |
| 7 | Rotor | Arbre | 1 | Page 31 | Page 31 |
| 8 | Rotor | Arbre | 1 | Page 32 | Page 32 |
| 9 | Jockey pulley | Rouleau tendant | 1 | Page 35 | Page 35 |
| 10 | Washer | Rondelle | 1 | 289 | 289 |
| 11 | Bolt | Boulon | 1 | 1446 | 1446 |
| 12 | Front wheel | Roue support | 1 | Page 40 | Page 40 |
| 13 | Jack | Cric | 1 | 10865 | 10865 |
| 15 | Buffer | Tampon | 1 | 10423 | 10423 |
| 16 | Screw | Vis | 1 | 2830 | 2830 |
| 17 | Endplate | Conduite | 1 | 10864 | 10864 |
| 18 | Bolt | Boulon | 6 | 2941 | 2941 |
| 19 | Lockwasher | Rondelle freine | 7 | 2878 | 2878 |
| 20 | Nut | Ecrou | 7 | 2884 | 2884 |
| 21 | V-belt | Courroie | 2 | 2070 | 2045 |
| 22 | V-belt | Courroie | 3 | 2032 | 2035 |
| 23 | Adjusting bolt | Vis tendant | 1 | 10223 | 10223 |
| 24 | Nut | Ecrou | 1 | 2885 | 2885 |
| 25 | Frame | Châssis | 1 | 11445 | 11444 |
| 26 | Linch pin and ring | Anneau d'arrêt | 3 | 1991 | 1991 |
| 27 | Draw bar | Barre tireur | 1 | 11482 | 11482 |
| 28 | Pin | Tourillon | 1 | 11489 | 11489 |
| 29 | Pin | Tourillon | 1 | 10851 | 10851 |
| 30 | Rest jack | Echasse | 1 | 10573 | 10573 |
| 31 | Retainer clip | Goujon d'arrêt | 2 | 1987 | 1987 |
| 32 | Rubber clamp | Fixation | 7 | 10086 | 10086 |
| 33 | Guard | Protection | 1 | 10768 | 10764 |
| 34 | Guard | protection | 1 | 10770 | 10766 |

| Det. Nomenclature | | | Qty. | ZA-340 No. | ZA-380 No. |
|-------------------|--------------------|-----------------------|------|---------------|---------------|
| 2 | Gearbox | Transmission | 1 | Page 20 | Page 20 |
| 3 | Swinging wheel | Disque mobile | 1 | Page 23 | Page 23 |
| 4 | Wheel assy | Roue | 2 | Page 24 | Page 24 |
| 5 | P.T.O. shaft | Arbre de cardan | 1 | Page 27 | Page 27 |
| 6 | Rotor | Arbre | 1 | Page 28 | Page 28 |
| 7 | Rotor | Arbre | 1 | Page 31 | Page 31 |
| 8 | Rotor | Arbre | 1 | Page 32 | Page 32 |
| 9 | Jockey pulley | Rouleau tendant | 1 | Page 35 | Page 35 |
| 10 | Rotor | Arbre | 1 | Page 36 | Page 36 |
| 11 | Jockey pulley | Rouleau tendant | 1 | Page 39 | Page 39 |
| 12 | Front wheel | Roue support | 1 | Page 40 | Page 40 |
| 17 | Endplate | Conduite | 1 | 10864 | 10864 |
| 18 | Bolt | Boulon | 6 | 2941 | 2941 |
| 19 | Lockwasher | Rondelle freine | 7 | 2878 | 2878 |
| 20 | Nut | Ecrou | 7 | 2884 | 2884 |
| 21 | V-belt | Courroie | 4 | 2070 | 2045 |
| 22 | V-belt | Courroie | 4 | 2032 | 2035 |
| 23 | Adjusting bolt | Vis tendant | 1 | 10223 | 10223 |
| 24 | Nut | Ecrou | 3 | 2885 | 2885 |
| 25 | Frame | Châssis | 1 | 11443 | 11442 |
| 26 | Linch pin and ring | Anneau d'arrêt | 3 | 1991 | 1991 |
| 27 | Drawbar | Barre tireur | 1 | 11482 | 11482 |
| 29 | Pin | Tourillon | 1 | 11489 | 11489 |
| 30 | Pin | Tourillon | 2 | 10851 | 10851 |
| 31 | Rest jack | Echasse | 1 | 10573 | 10573 |
| 32 | Rubber clamp | Fixation | 9 | 10086 | 10086 |
| 33 | Retainer clip | Goujon d'arrêt | 2 | 1987 | 1987 |
| 34 | Guard | Protection | 1 | 10768 | 10764 |
| 35 | Guard | Protection | 1 | 10780 | 10777 |
| 36 | Guard | Protection | 1 | 10781 | 10778 |
| 37 | Buffer | Tampon | 2 | 10423 | 10423 |
| 38 | Washer | Rondelle | 2 | 289 | 289 |
| 39 | Screw | Vis | 2 | 1446 | 1446 |
| 41 | Jack | Cric | 1 | 10865 | 10865 |
| 43 | Screw | Vis | 1 | 2830 | 2830 |

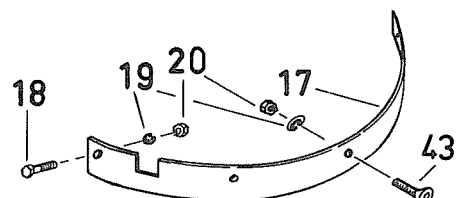


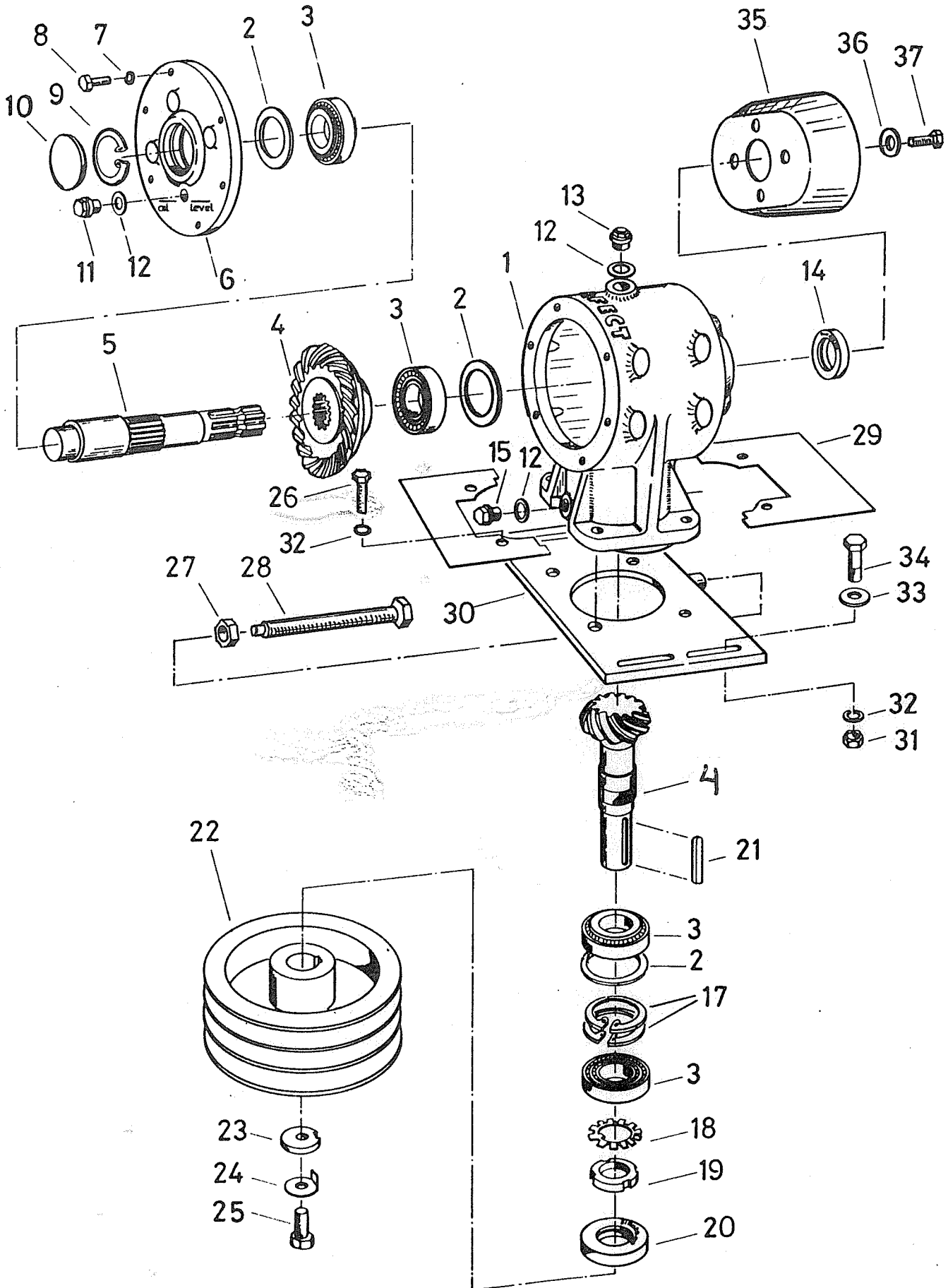
A. Lead edge
Front

must be 2" lower than
doit être 5 cm. plus bas que

B. Rear edge
Arrière

→ Grease and oil as indicated
Graissez et huilez comme indiqué



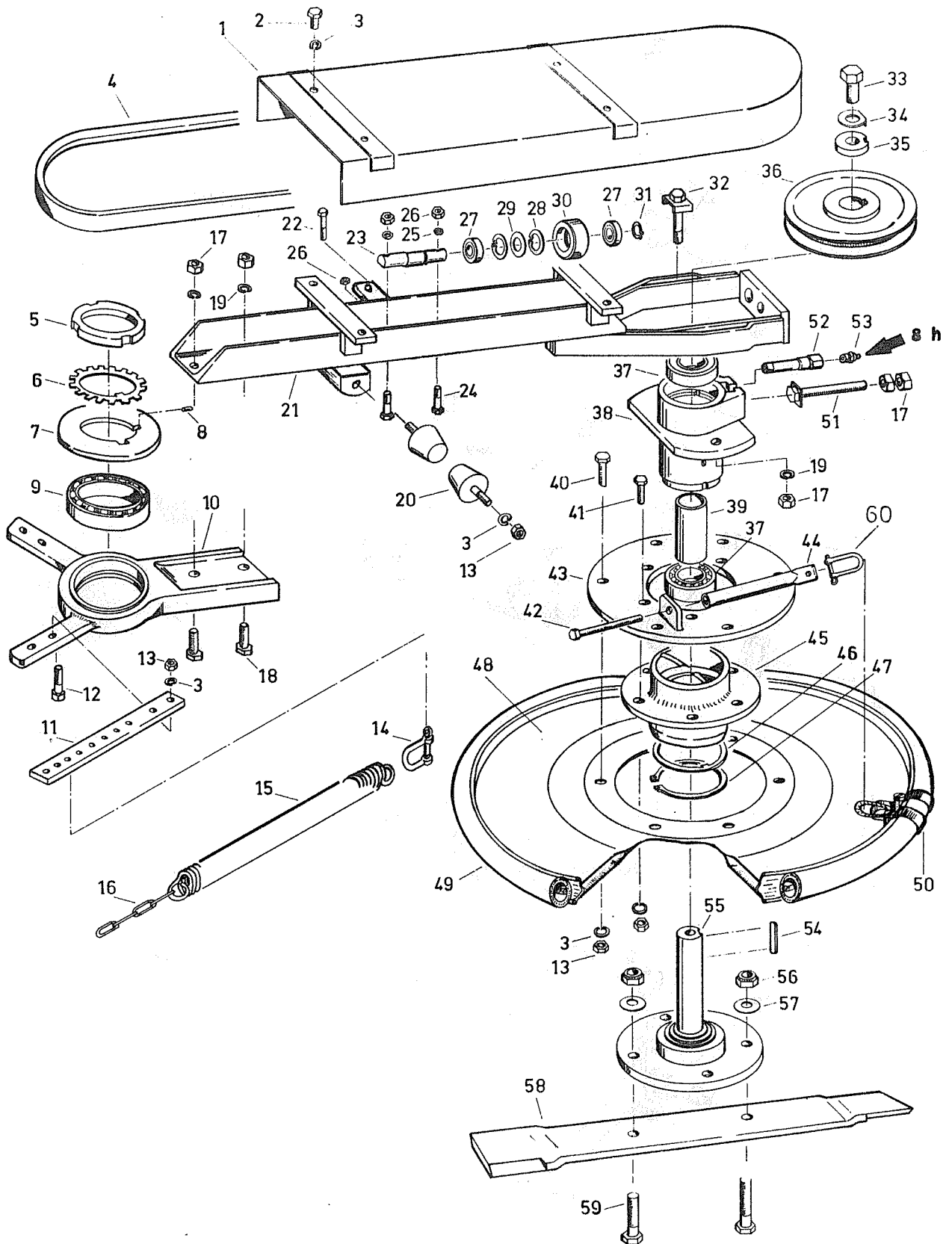


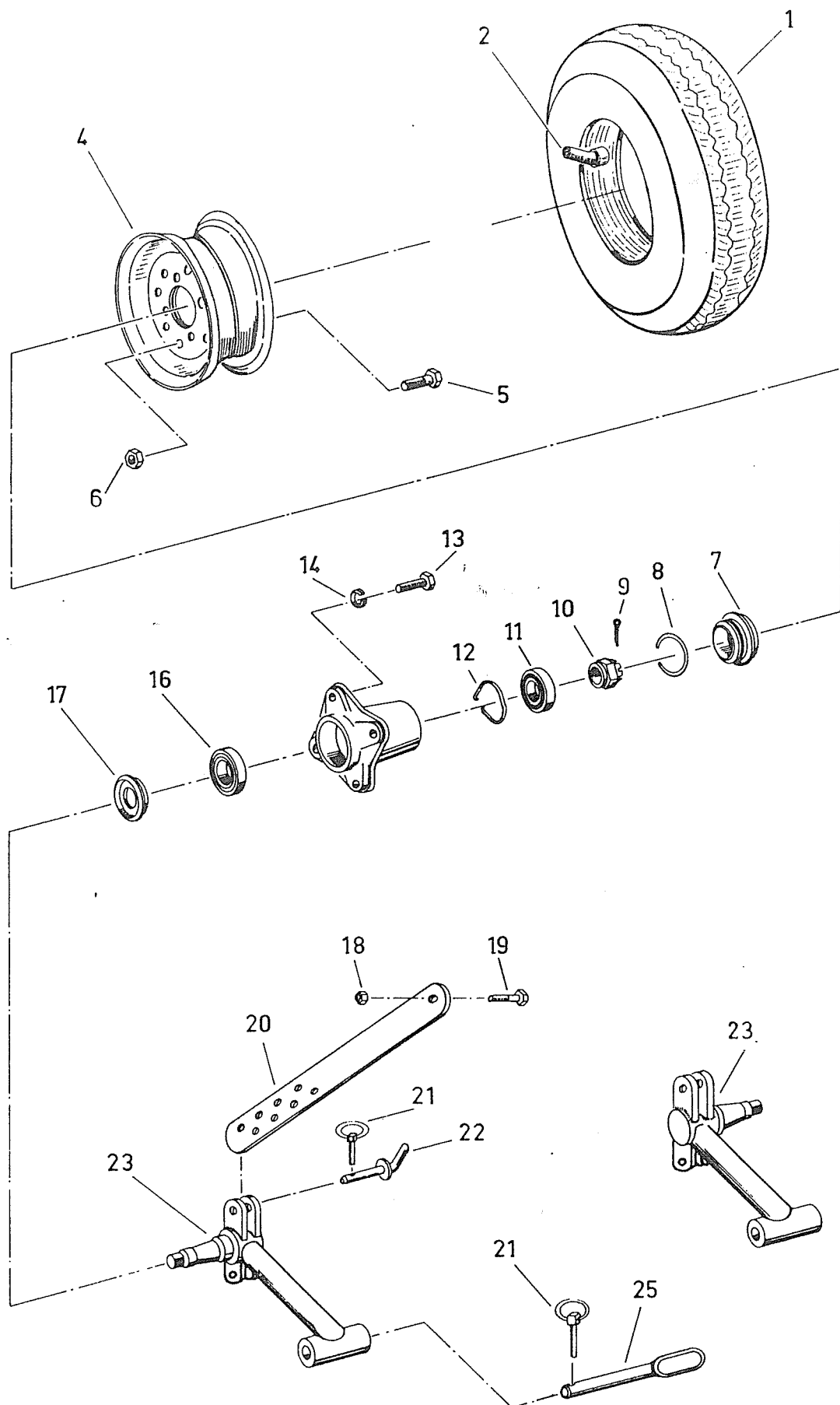
| Det. Nomenclature | Qty. | No. |
|--|------|-------|
| + Gearbox - Transmission | 1 | 11886 |
| +1 Housing - Boîte | 1 | 10279 |
| +2 Shimset - Epaisseurs | 3 | 11860 |
| +3 Bearing - Roulement | 4 | 1913 |
| +4 Drive gear SET | 1 | 15129 |
| +5 Shaft - Arbre | 1 | 10089 |
| +6 Cover - Couvercle | 1 | 10280 |
| +7 Lockwasher - Rondelle grover | 6 | 2877 |
| +8 Bolt - Boulon | 6 | 2925 |
| +9 Snapring - Circlip | 1 | 2873 |
| +10 Cover - Couvercle | 1 | 3099 |
| +11 Plug - Bouchon | 1 | 10281 |
| +12 Gasket - Garniture | 3 | 2015 |
| +13 Breather - Reniflard | 1 | 10066 |
| +14 Oil seal - Joint | 1 | 2001 |
| +15 Magnetic plug - Bouchon magnétique | 1 | 10282 |
| +17 Snapring - Ciclips | 2 | 1931 |
| +18 Lockwasher - Rondelle freine | 1 | 1683 |
| +19 Locknut - Ecrou freine | 1 | 1682 |
| +20 Oil seal - Joint | 1 | 2048 |
| 21 Key - Clavette | 1 | 1562 |
| 23 Washer - Rondelle | 1 | 10074 |
| 24 Lockwasher - Rondelle freine | 1 | 10215 |
| 25 Bolt - Boulon | 1 | 2942 |
| 26 Bolt - Boulon | 4 | 2943 |
| 27 Nut - Ecrou | 1 | 2885 |
| 28 Bolt - Boulon | 1 | 10223 |
| 29 Cover - Couvercle | 1 | 10847 |
| 30 Plate - Plaque | 1 | 11416 |
| 31 Nut - Ecrou | 7 | 2884 |
| 32 Lockwasher - Rondelle grover | 7 | 2878 |
| 33 Washer - Rondelle | 3 | 2060 |
| 34 Bolt - Boulon | 3 | 2942 |
| 35 Cover - Protection | 1 | 11662 |
| 36 Washer - Rondelle | 4 | 2058 |
| 37 Bolt - Boulon | 4 | 2923 |
| 22 Pulley - Poulie 4C225 | 1 | 10307 |

IMPORTANT!

For installation of oil seal Det. 36 Part. nr. 2048, please take notice of special instruction on additional page at the beginning of this book under gearbox.

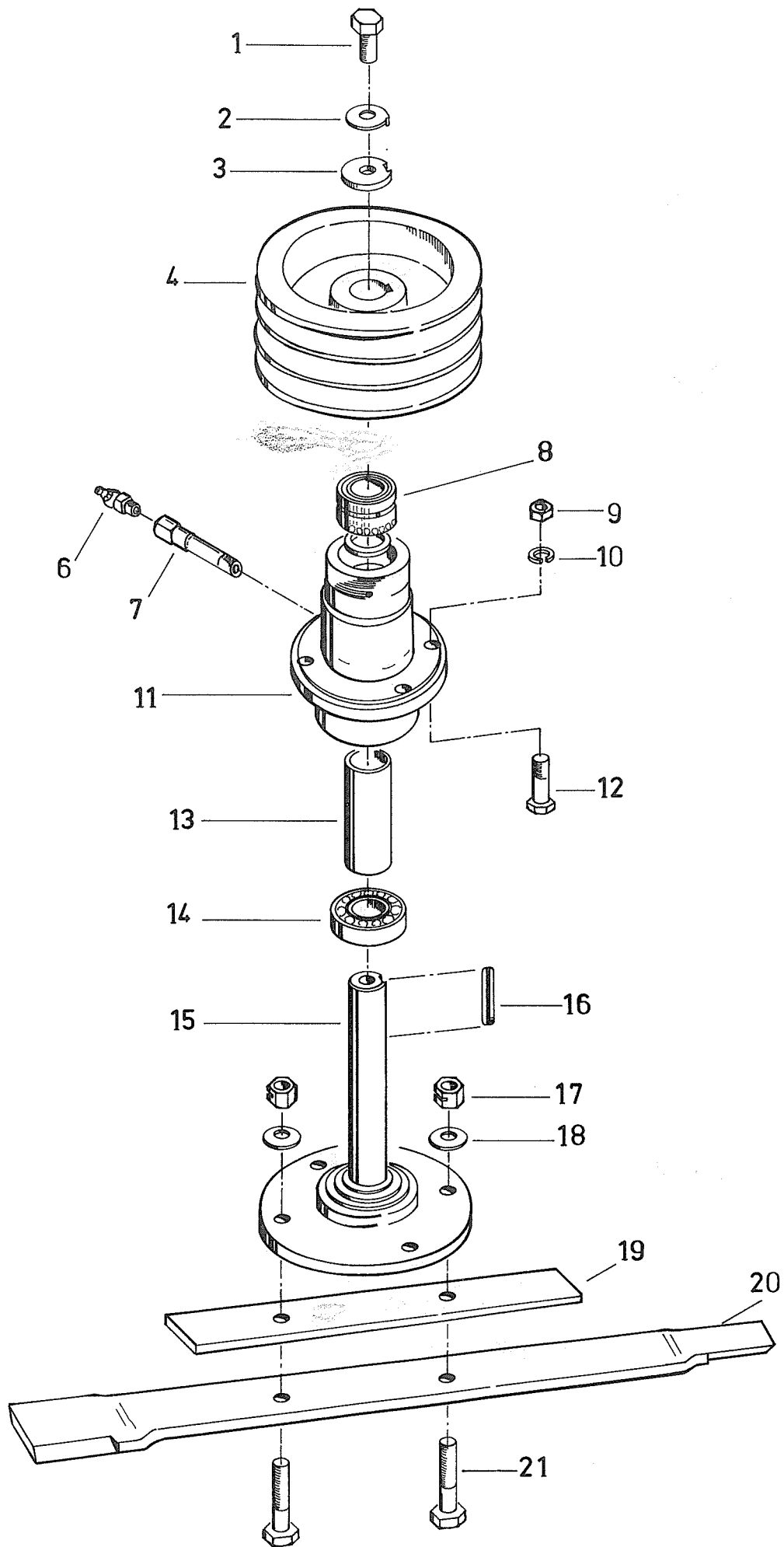
| Det. | Nomenclature | | Qty. | Nr. |
|-------|----------------|----------------------|------|-------|
| 1 | Guard | Protection | 1 | 10186 |
| 2 | Bolt | Vis | 4 | 2922 |
| *3 | Lockwasher | Rondelle freine | 20 | 2877 |
| 4 | V-belt | Courroie | 1 | 2040 |
| 5 | Locknut | Ecrou | 1 | 1696 |
| 6 | Lockwasher | Rondelle d'arrêt | 1 | 1697 |
| 7 | Dustplate | Bouclier | 1 | 10187 |
| 8 | Lockpin | Cheville | 1 | 10123 |
| 9 | Bearing | Roulement | 1 | 2024 |
| 10 | Housing | Boîte | 1 | 10180 |
| 11 | Strap | Plaque | 1 | 11417 |
| 12 | Bolt | Vis | 2 | 2925 |
| *13 | Nut | Ecrou | 16 | 2883 |
| 14 | Harp shackle | Serrure | 1 | 1584 |
| 15 | Spring | Ressort | 1 | 3065 |
| 16 | Chain | Chaîne | 1 | 11383 |
| 17 | Nut | Ecrou | 6 | 2884 |
| 18 | Bolt | Vis | 2 | 2941 |
| 19 | Lockwasher | Rondelle freine | 4 | 2878 |
| 20 | Buffer | Tampon | 2 | 2847 |
| 21 | Swing arm | Bras mobile | 1 | 11784 |
| 22 | Bolt | Vis | 1 | 2910 |
| + | Roller cpl. | Galet cpl. | 1 | 10501 |
| +23 | Shaft | Arbre | 1 | 10213 |
| 24 | Bolt | Vis | 2 | 2904 |
| 25 | Lockwasher | Rondelle freine | 2 | 2876 |
| 26 | Nut | Ecrou | 2 | 2883 |
| +27 | Bearing | Roulement | 2 | 1761 |
| +28 | Snapping | Jonc d'arrêt | 2 | 2201 |
| +29 | Shim | Cale | 1 | 10424 |
| +30 | Roller | Galet | 1 | 10116 |
| +31 | Snapping | Jonc d'arrêt | 1 | 1917 |
| 32 | Bolt | Vis | 2 | 10427 |
| 33 | Bolt | Vis | 1 | 2962 |
| 34 | Lockplate | Rondelle freine | 1 | 10214 |
| 35 | Washer | Rondelle | 1 | 10044 |
| 36 | Pulley 1C180 | Poulie 1C180 | 1 | 10177 |
| . | Housing cpl. | Boîte cpl. | 1 | 10500 |
| .37 | Bearing | Roulement | 2 | 1796 |
| .38 | Housing | Boîte | 1 | 10166 |
| .39 | Spacer | Entretoise | 1 | 10211 |
| *40 | Bolt | Vis | 6 | 2923 |
| 41 | Bolt | Vis | 6 | 2924 |
| *42 | Bolt | Vis | 1 | 11490 |
| *43 | Disc | Disque | 1 | 11474 |
| *44 | Adjusting ear | Oreille avec tendeur | 1 | 11491 |
| 45 | Hub | Moyeu | 1 | 10165 |
| 46 | Carrier | Galet | 1 | 10212 |
| 47 | Snapping | Jonc d'arrêt | 1 | 2021 |
| x | Wheel cpl. | Jante cpl. | 1 | 12042 |
| *x48 | Wheel | Jante | 1 | 12041 |
| *x49 | Tyre cpl. | Bandage cpl. | 1 | 12040 |
| *x50 | Hose clip | Collier de serrage | 2 | 2858 |
| .51 | Adjusting bolt | Vis de tension | 1 | 10426 |
| .52 | Extension tube | Rallonge | 1 | 1532 |
| .53 | Grease nipple | Graisserieur | 1 | 1537 |
| 54 | Key | Clavette | 1 | 1559 |
| 55 | Rotorshaft | Arbre | 1 | 11415 |
| 56 | Locknut | Ecrou freine | 2 | 211 |
| 57 | Disc spring | Rondelle ressort | 2 | 2795 |
| 58 | SEE PAGE 44 | PAGE 44 | | |
| 59 | Bolt | Vis | 2 | 2964 |
| 77*60 | Harp shackle | Serrure | 1 | 1585 |





| Det. | Nomenclature | | Qty. | Nr. |
|------|---------------------|----------------------|------|-------|
| x | Wheel 600 x 9 cpl. | Jante 600 x 9 cpl. | 1 | 11467 |
| x1 | Tyre 600 x 9 | Pneu 600 x 9 | 1 | 10585 |
| x2 | Tube | Chambre à air | 1 | 10586 |
| x4 | Rim cpl. +5+6 | Jante cpl. +5+6 | 1 | 10584 |
| x5 | Bolt | Vis | 8 | 2712 |
| x6 | Nut | Ecrou | 8 | 2711 |
| . | Hub cpl. | Moyeu cpl. | 1 | 10578 |
| .7 | Dustcap | Couvercle | 1 | 10582 |
| .8 | Spring | Ressort | 1 | 2842 |
| .9 | Cotterpin | Coupille fendue | 1 | 1957 |
| .10 | Castle nut | Ecrou de couronne | 1 | 10581 |
| .11 | Bearing | Roulement | 1 | 2713 |
| .12 | Spring | Ressort | 1 | 2843 |
| .13 | Bolt | Vis | 4 | 2839 |
| .14 | Lockwasher | Rondelle freine | 4 | 2838 |
| .16 | Bearing | Roulement | 1 | 1911 |
| .17 | Seal | Joint | 1 | 10580 |
| + | Wheel axle arm cpl. | Bras de la roue cpl. | 1 | 11446 |
| +18 | Locknut | Ecrou freine | 1 | 211 |
| +19 | Bolt | Vis | 1 | 2969 |
| +20 | Adjusting link | Barre de réglage | 1 | 11783 |
| +21 | Linch pin & ring | Anneau d'arrêt | 2 | 1991 |
| +22 | Pin | Tourillon | 1 | 11447 |
| +23 | Arm | Bras | 1 | 11787 |
| +25 | Pin | Tourillon | 1 | 11366 |

| Det. | Nomenclature | Qty. | Std. No. |
|------|--|-------|-----------------------------|
| ♣ | Aftakas – P.T.O. shaft – Gelenkwelle – Arbre de cardan | 1 | 3.107384 |
| 4 | Bescherming buiten kpl. – Outer P.T.O. drive shaft guard – Ausserer Gelenkwelleschutz kpl. – Protecteur extérieur transmission | 1 | 3.13357 |
| 5 | Bescherming binnen kpl. – Inner P.T.O. drive shaft guard – Innerer Gelenkwelleschutz kpl. – Protecteur intérieur transmission | 1 | 3.13358 |
| | | | Walterscheid No. |
| 11 | Gaffel ASGE kpl. – Quick release yoke ASGE cpl. – Aufsteckgabel ASGE kpl. – Mâchoire à fixation ASGE cpl. | 1 | 133836 |
| 12 | ASE-snelsluiting type B kpl. – ASE-lock size B cpl. – ASE-Verschluss Größe B kpl. – Verrouillage ASE type B cpl. | 1 | 135048 |
| 13 | Gaffel kpl. – Quick release yoke cpl. – Aufsteckgabel kpl. – Mâchoire à fixation cpl. | 1 / 0 | 056699 |
| 14 | Schuifstift kpl. – Slide bolt cpl. – Schiebestift kpl. – Axe cpl. | 1 | 339 107 |
| 21 | Kruisstuk – Spider – Kreuzgarnitur – Croisillon | 2 | 312410 |
| 22 | Smeernippel – Grease nipple – Schmiernippel – Graisseur | 2 | 084099 |
| 23 | Gaffel binnenpijp – Inboard yoke inner tube – Rillengabel Innenroher – Mâchoire à gorge tube intérieur | 1 | 019518 |
| 24 | Spanhuis – Roll pin – Spannstifte – Goupille | 2 | 020617 |
| 25 | Profielbuis binnen– Profil tube inner – Profilrohr Innen – Tube profile intérieur L = 1.240mm | 1 | 75.25.65 |
| 26 | Profielbuis buiten– Profil tube outer – Profilrohr aussen – Tube profile extérieur L = 1.215mm | 1 | 75.35.15 |
| 27 | Gaffel buitenpijp – Inboard yoke outer tube – Rillengabel Aussenroher – Mâchoire à gorge tube extérieur | 1 | 019519 |
| 51 | Glijring – Slidring – Gleitring – Bague de glissement | 2 | 087276 |
| 52 | Beschermkap - Cover - Schutzhaube – Protection | 2 | 365367 |
| 53 | Schroef – Screw – Schraube – Vis 3,5 x 9,5 | 2 | 365305 |
| 54 | Ring – Washer – Scheibe – Rondelle..... | 2 | 359471 |
| 55 | Borgketting – Safety chain – Halte kette – Chaînette | 2 | 044321 |
| 61 | Vrijloopkoppeling – Overrunning Clutch – Freilaufkuppelung – Roue libre | 1 | 3.12479 |



| Det. | Nomenclature | | Qty. | No. | No. |
|------|----------------|------------------|------|--------|--------|
| | | | | ZA-300 | ZA-270 |
| | | | | ZA-380 | ZA-340 |
| 1 | Bolt | Vis | 1 | 2962 | 2962 |
| 2 | Lockplate | Rondelle freine | 1 | 10214 | 10214 |
| 3 | Washer | Rondelle | 1 | 10044 | 10044 |
| 4 | Pulley (3C200) | Poulie (3C200) | 1 | 10306 | 10306 |
| + | Housing cpl. | Boîte cpl. | 1 | 10499 | 10499 |
| +6 | Grease nipple | Graisser | 1 | 1538 | 1538 |
| +7 | Extension tube | Rallonge | 1 | 1532 | 1532 |
| +8 | Needle bearing | Roulement | 1 | 2860 | 2860 |
| 9 | Nut | Ecrou | 4 | 2884 | 2884 |
| 10 | Lockwasher | Rondelle freine | 4 | 2878 | 2878 |
| +11 | Housing | Boîte | 1 | 10164 | 10164 |
| 12 | Bolt | Vis | 4 | 2943 | 2943 |
| +13 | Spacer | Entretoise | 1 | 10209 | 10209 |
| +14 | Bearing | Roulement | 1 | 1796 | 1796 |
| 15 | Shaft | Arbre | 1 | 11103 | 11103 |
| 16 | Key | Clavette | 1 | 1560 | 1560 |
| 17 | Locknut | Ecrou freine | 2 | 211 | 211 |
| 18 | Disc spring | Rondelle ressort | 2 | 2795 | 2795 |
| 19 | Bar | Barre | 1 | 11133 | ---- |
| 20 | SEE PAGE 44 | PAGE 44 | | | |
| 21 | Bolt | Vis | 2 | 2966 | 2964 |

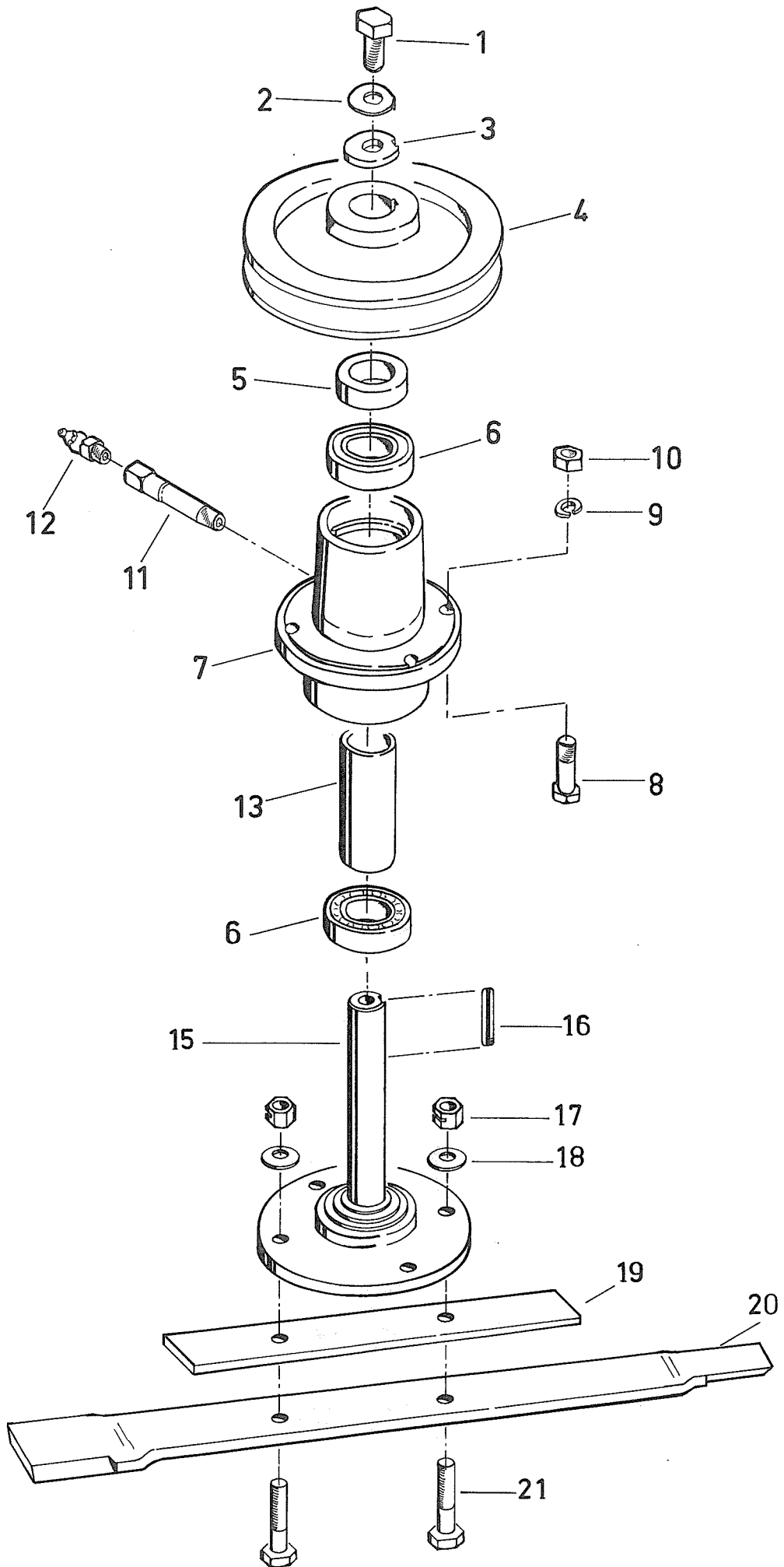
IMPORTANT !

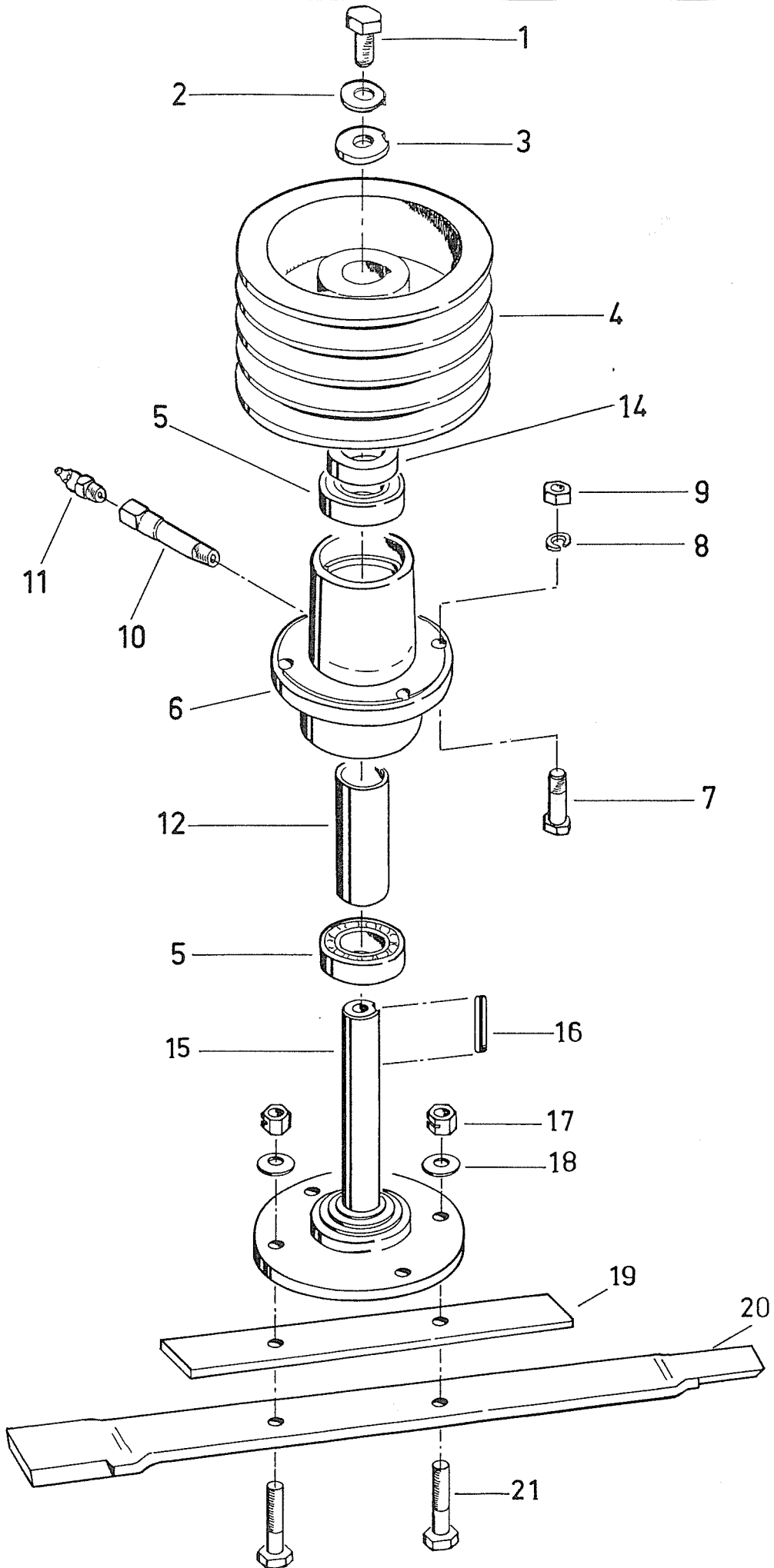
x Bearing Nr. 2860 (Det. 8) must be fitted so, that balls are at bottom side.

IMPORTANT !

x Roulement Nr. 2860 (Det. 8) à monter tellement, que billes sont au bas.

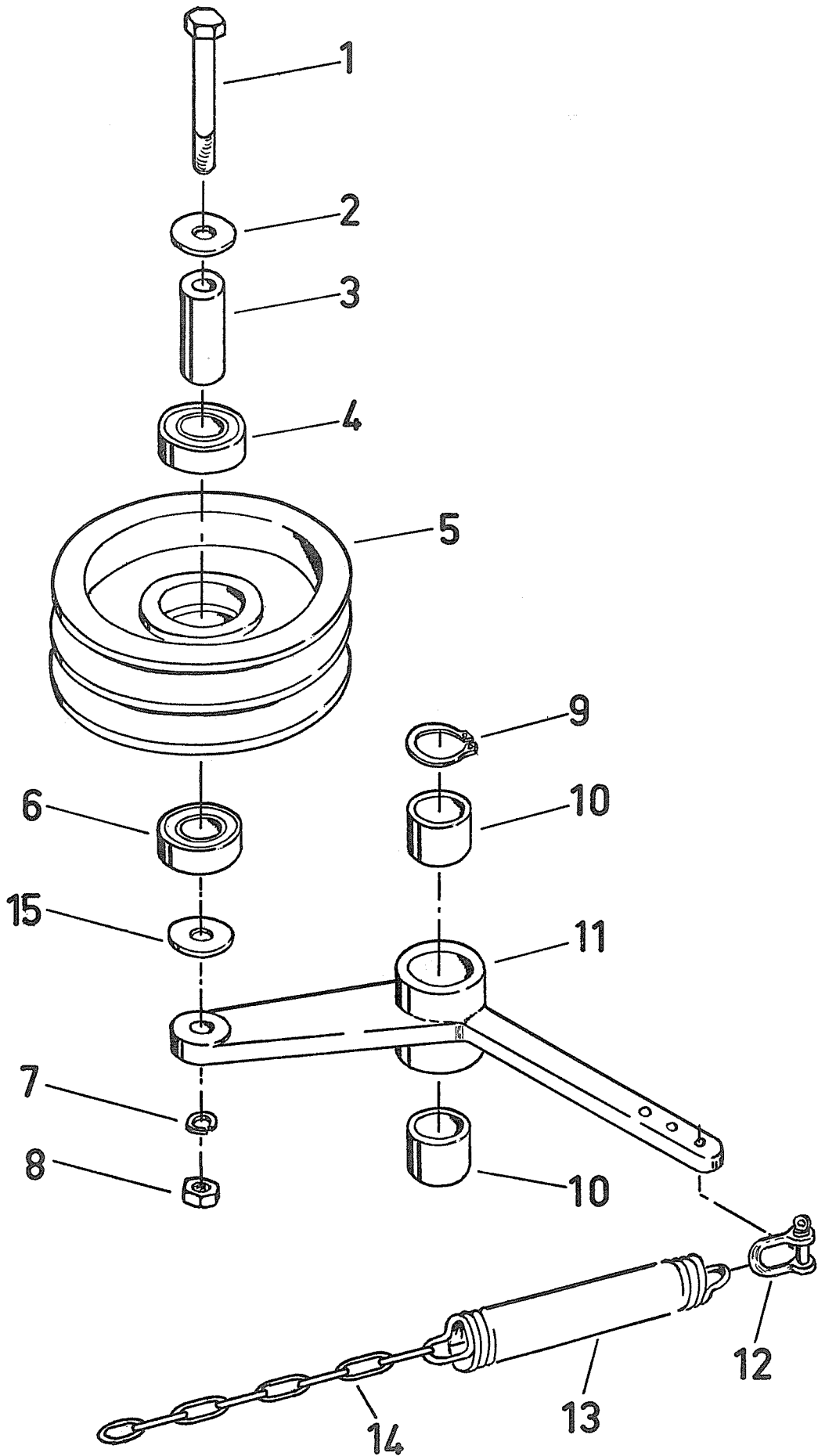
| Det. | Nomenclature | Qty. | ZA-270 | ZA-300 | ZA-340 | ZA-380 |
|------|----------------|------|--------|--------|--------|--------|
| | | | Nr. | Nr. | Nr. | Nr. |
| 1 | Bolt | 1 | 2962 | 2962 | 2962 | 2962 |
| 2 | Lockplate | 1 | 10214 | 10214 | 10214 | 10214 |
| 3 | Washer | 1 | 10044 | 10044 | 10044 | 10044 |
| 4 | Pulley (1C200) | 1 | 10174 | 10174 | 10174 | 10174 |
| + | Housing cpl. | 1 | 10498 | 10498 | 10498 | 10498 |
| 5 | Spacer | 1 | 10194 | 10194 | ----- | ----- |
| +6 | Bearing | 2 | 1796 | 1796 | 1796 | 1796 |
| +7 | Housing | 1 | 10163 | 10163 | 10163 | 10163 |
| 8 | Bolt | 4 | 2943 | 2943 | 2943 | 2943 |
| 9 | Lockwasher | 4 | 2878 | 2878 | 2878 | 2878 |
| 10 | Nut | 4 | 2884 | 2884 | 2884 | 2884 |
| +11 | Extension tube | 1 | 1532 | 1532 | 1532 | 1532 |
| +12 | Grease nipple | 1 | 1538 | 1538 | 1538 | 1538 |
| +13 | Spacer | 1 | 10210 | 10210 | 10210 | 10210 |
| 15 | Rotor | 1 | 11103 | 11103 | 11104 | 11104 |
| 16 | Key | 1 | 1560 | 1560 | 1560 | 1560 |
| 17 | Locknut | 2 | 211 | 211 | 211 | 211 |
| 18 | Disc spring | 2 | 2795 | 2795 | 2795 | 2795 |
| 19 | Bar | 1 | ----- | 11133 | ----- | 11133 |
| 20 | SEE PAGE 44 | | | | | |
| 21 | Bolt | 2 | 2964 | 2966 | 2964 | 2966 |

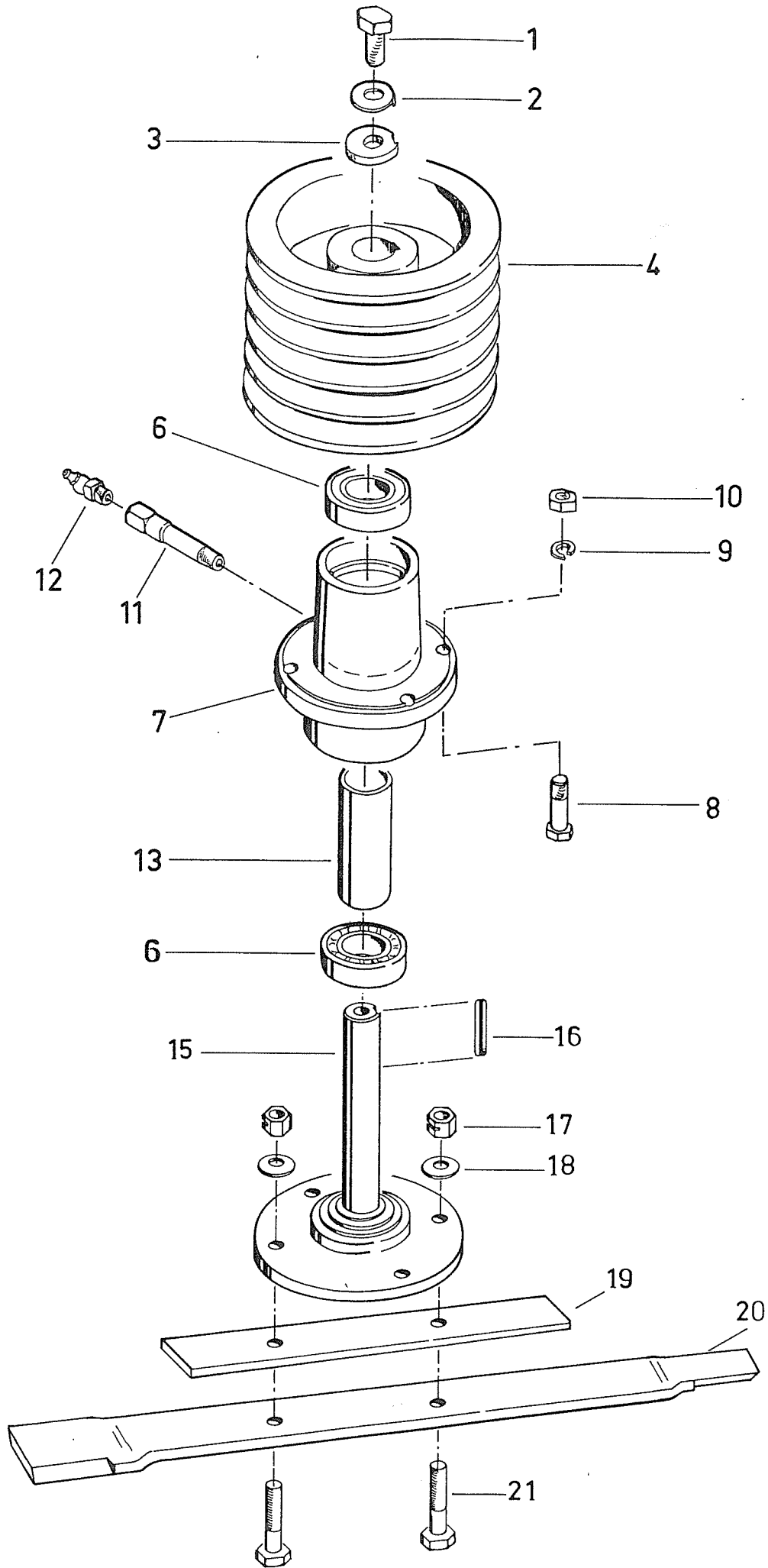




| | | 15-24 | | ZA-270 | ZA-300 | ZA-340 | ZA-380 |
|------|--------------------|------------------|------|--------|--------|--------|--------|
| Det. | Nomenclature | | Qty. | Nr. | Nr. | Nr. | Nr. |
| 1 | Bolt | Vis | 1 | 2962 | 2962 | 2962 | 2962 |
| 2 | Lockplate | Rondelle freine | 1 | 10214 | 10214 | 10214 | 10214 |
| 3 | Washer | Rondelle | 1 | 10044 | 10044 | 10044 | 10044 |
| 4 | Pulley (4C200) | Poulie (4C200) | 1 | 10308 | 10308 | 10308 | 10308 |
| + | Housing cpl. | Boîte cpl. | 1 | 10498 | 10498 | 10498 | 10498 |
| +5 | Bearing | Roulement | 2 | 1796 | 1796 | 1796 | 1796 |
| +6 | Housing | Boîte | 1 | 10163 | 10163 | 10163 | 10163 |
| 7 | Bolt | Vis | 4 | 2943 | 2943 | 2943 | 2943 |
| 8 | Lockwasher | Rondelle freine | 4 | 2878 | 2878 | 2878 | 2878 |
| 9 | Nut | Ecrou | 4 | 2884 | 2884 | 2884 | 2884 |
| +10 | Extension tube | Rallonge | 1 | 1532 | 1532 | 1532 | 1532 |
| +11 | Grease nipple | Graisser | 1 | 1538 | 1538 | 1538 | 1538 |
| +12 | Spacer | Entretoise | 1 | 10210 | 10210 | 10210 | 10210 |
| 14 | Spacer | Entretoise | 1 | ----- | ----- | 10862 | 10862 |
| 15 | Rotor | Arbre | 1 | 11103 | 11103 | 11105 | 11105 |
| 16 | Key | Clavette | 1 | 1561 | 1561 | 1561 | 1561 |
| 17 | Locknut | Ecrou freine | 2 | 211 | 211 | 211 | 211 |
| 18 | Disc spring | Rondelle ressort | 2 | 2795 | 2795 | 2795 | 2795 |
| 19 | Bar | Barre | 1 | ----- | 11133 | ----- | 11133 |
| 20 | <i>SEE PAGE 44</i> | <i>PAGE 44</i> | | | | | |
| 21 | Bolt | Boulon | 2 | 2964 | 2966 | 2964 | 2966 |

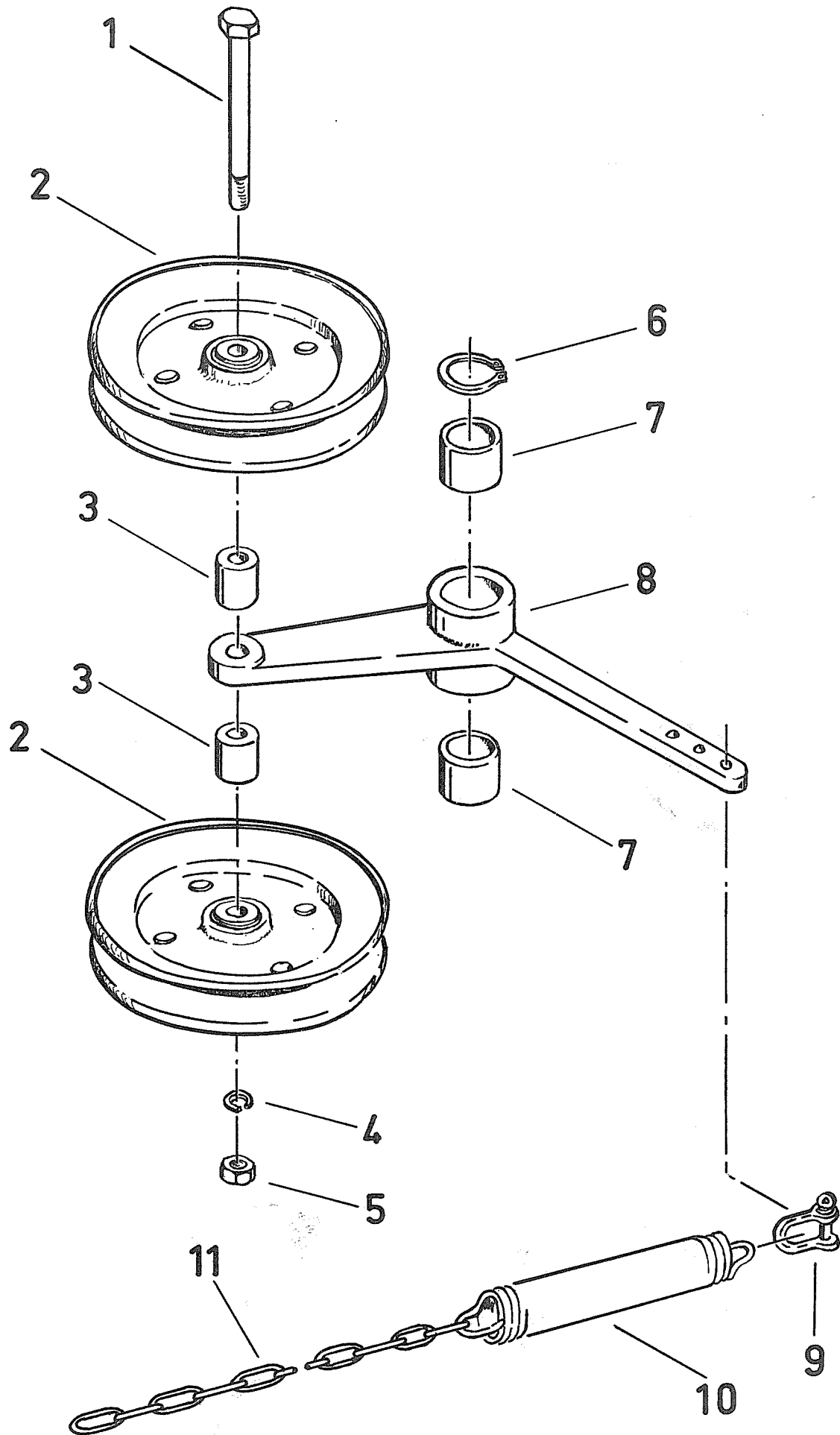
| Det. | Nomenclature | | Qty. | Nr. |
|------|-----------------------|------------------------|------|-------|
| 1 | Bolt | Vis | 1 | 2952 |
| 2 | Washer | Rondelle | 1 | 2060 |
| 3 | Shaft | Arbre | 1 | 10435 |
| 4 | Bearing | Roulement | 1 | 1802 |
| 5 | Jockey pulley (2C180) | Rouleau tendre (2C180) | 1 | 10309 |
| 6 | Bearing | Roulement | 1 | 1802 |
| 7 | Lockwasher | Rondelle freine | 1 | 2878 |
| 8 | Nut | Ecrou | 1 | 2884 |
| 9 | Snapring | Jonc d'arrêt | 1 | 2020 |
| 10 | Bushing | Douille | 2 | 2292 |
| 11 | Crank (incl.Det.10) | Levier (incl.Det.10) | 1 | 10222 |
| 12 | Harp shackle | Serrure | 1 | 1584 |
| 13 | Spring | Ressort | 1 | 3034 |
| 14 | Chain (11") | Chaîne (28 cm.) | 1 | 11382 |
| 15 | Washer | Rondelle | 1 | 2060 |

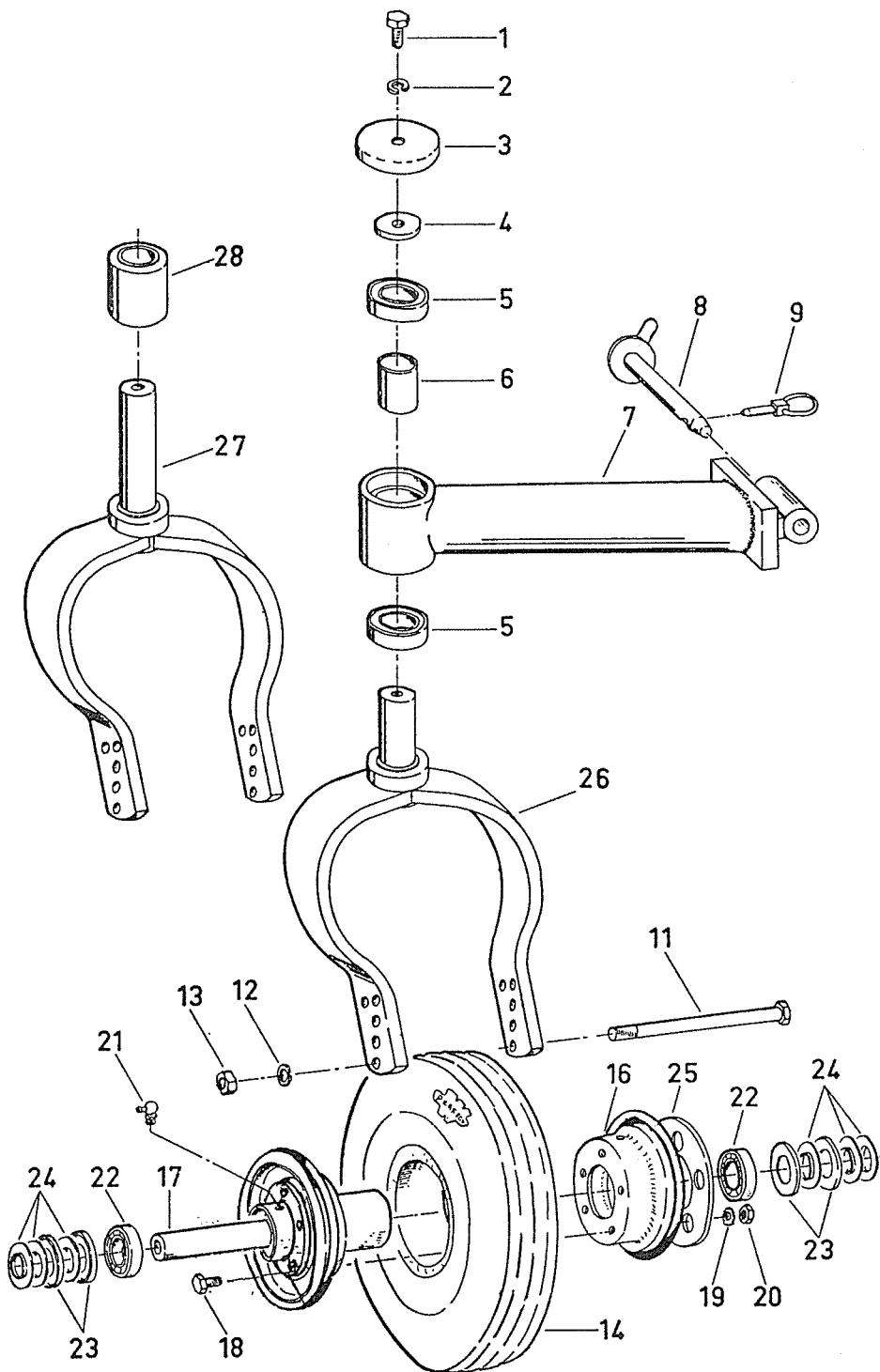




| Det. | Nomenclature | Qty. | ZA-340 | ZA-380 | |
|------|--------------------|------------------|--------|--------|-------|
| | | | Nr. | Nr. | |
| 1 | Bolt | Vis | 1 | 2962 | 2962 |
| 2 | Lockplate | Rondelle freine | 1 | 10214 | 10214 |
| 3 | Washer | Rondelle | 1 | 10044 | 10044 |
| 4 | Pulley (50200) | Poulie (50200) | 1 | 10743 | 10743 |
| + | Housing cpl. | Boîte cpl. | 1 | 10498 | 10498 |
| +6 | Bearing | Roulement | 2 | 1796 | 1796 |
| +7 | Housing | Boîte | 1 | 10163 | 10163 |
| 8 | Bolt | Vis | 4 | 2943 | 2943 |
| 9 | Lockwasher | Rondelle freine | 4 | 2878 | 2878 |
| 10 | Nut | Ecrou | 4 | 2884 | 2884 |
| +11 | Extension tube | Rallonge | 1 | 1532 | 1532 |
| +12 | Grease nipple | Graisser | 1 | 1538 | 1538 |
| +13 | Spacer | Entretoise | 1 | 10210 | 10210 |
| 15 | Rotor | Arbre | 1 | 11105 | 11105 |
| 16 | Key | Clavette | 1 | 1562 | 1562 |
| 17 | Locknut | Rondelle freine | 2 | 211 | 211 |
| 18 | Disc spring | Rondelle ressort | 2 | 2795 | 2795 |
| 19 | Bar | Barre | 1 | ----- | 11133 |
| 20 | <i>SEE PAGE 44</i> | <i>PAGE 44</i> | | | |
| 21 | Bolt | Boulon | 2 | 2964 | 2966 |

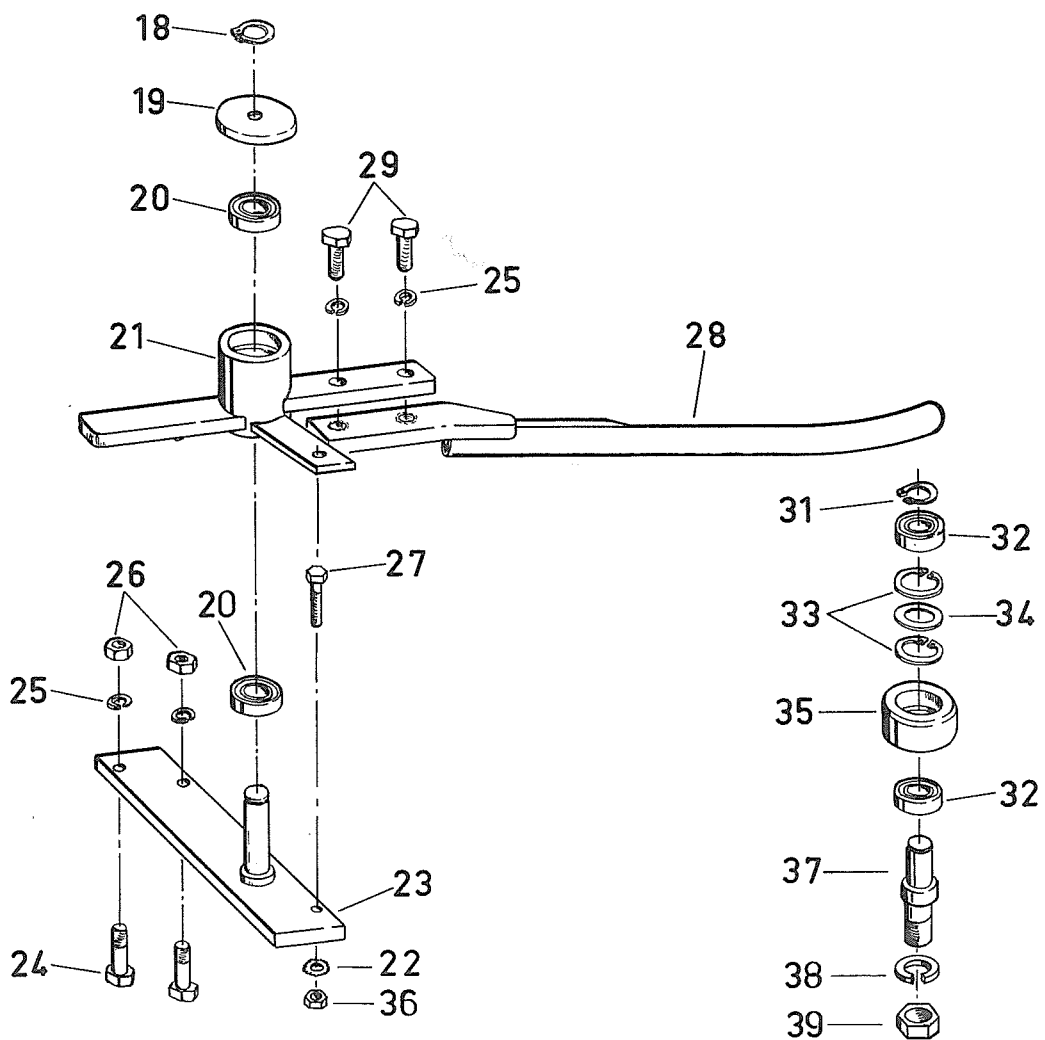
| Det. | Nomenclature | | Qty. | Nr. |
|------|--------------------|----------------------|------|-------|
| 1 | Bolt | Vis | 1 | 2954 |
| 2 | Jockey pulley | Rouleau tendre | 2 | 10547 |
| 3 | Spacer | Entretoise | 2 | 10863 |
| 4 | Lockwasher | Rondelle freine | 1 | 2878 |
| 5 | Nut | Ecrou | 1 | 2884 |
| 6 | Snapping | Jonc d'arrêt | 1 | 2020 |
| 7 | Bushing | Douille | 2 | 2292 |
| 8 | Crank (incl.det.7) | Levier (incl. det.7) | 1 | 11942 |
| 9 | Harp shackle | Serrure | 1 | 1584 |
| 10 | Spring | Ressort | 1 | 3034 |
| 11 | Chain (1'16") | Chaîne (46 cm.) | 1 | 11381 |

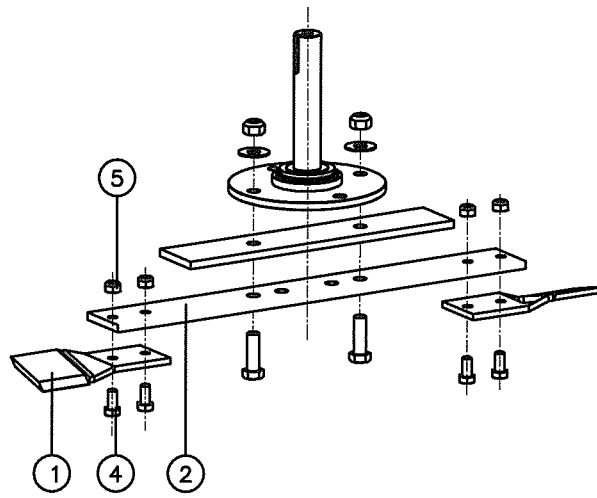




| Det. | Nomenclature | | Qty. | No. |
|------|---------------------|----------------------|------|-------|
| 1 | Bolt | Vis | 1 | 2923 |
| 2 | Lockwasher | Rondelle freine | 1 | 2877 |
| 3 | Dustcap | Bouclier | 1 | 10229 |
| 4 | Washer | Rondelle | 1 | 10230 |
| 5 | Bearing | Roulement | 2 | 1764 |
| 6 | Spacer | Entretoise | 1 | 10189 |
| 7 | Wheelsupport | Support | 1 | 10749 |
| 8 | Pin | Tourillon | 1 | 10849 |
| 9 | Linch pin & ring | Anneau d'arrêt | 1 | 1991 |
| 11 | Bolt | Vis | 1 | 2028 |
| 12 | Lockwasher | Rondelle freine | 1 | 2878 |
| 13 | Nut | Ecrou | 1 | 2884 |
| . | Wheel cpl. | Roue cpl. | 1 | 11960 |
| .14 | Solid tyre | Bandage | 1 | 10430 |
| +16 | Rim cpl. | Jante cpl. | 1 | 11955 |
| +17 | Shaft | Arbre | 1 | 10433 |
| +18 | Bolt | Vis | 5 | 3041 |
| +19 | Lockwasher | Rondelle freine | 5 | 1932 |
| +20 | Nut | Ecrou | 5 | 3042 |
| +21 | Grease nipple | Graisserieur | 1 | 1528 |
| +22 | Bearing | Roulement | 2 | 1729 |
| +23 | House lamel | Lamelle du bofte | 4 | 2216 |
| +24 | Shaft lamel | Lamelle de l'arbre | 6 | 2213 |
| +25 | Reinforcementplate | Plaque renforcement | 1 | 10033 |
| 26 | Wheelfork | Fourche | 1 | 10185 |
| 27 | Wheelfork (spec.) | Fourche (spéc.) | 1 | 10344 |
| 28 | Spacer | Entretoise | 1 | 10345 |
| | Wheel cpl. (pag.40) | Jante cpl. (page 40) | 1 | 12047 |

| | Det. Nomenclature | | Qty. | No. |
|--|----------------------|-------------------------|------|-------|
| | + Feeler cpl. | Tâtonneur cpl. | 1 | 10278 |
| | +18 Snapring | Arrêt seeger | 1 | 1917 |
| | +19 Cover | Bouclier | 1 | 10258 |
| | +20 Bearing | Roulement | 2 | 1761 |
| | +21 Housing | Boîte | 1 | 10260 |
| | +22 Lockwasher | Rondelle freine | 1 | 1932 |
| | +23 Feeler point | Arbre du tâtonneur | 1 | 10254 |
| | +24 Bolt | Boulon | 2 | 2925 |
| | +25 Lockwasher | Rondelle freine | 2 | 2877 |
| | +26 Nut | Ecrou | 2 | 2883 |
| | +27 Bolt | Boulon | 1 | 2904 |
| | +28 Feeler rod | Tâtonneur | 1 | 11526 |
| | +29 Bolt | Boulon | 2 | 2924 |
| | x Roller cpl. | Galet cpl. | 1 | 11497 |
| | x+31 Snapring | Arrêt seeger | 1 | 1917 |
| | x+32 Bearing | Roulement | 2 | 1761 |
| | x+33 Snapring | Arrêt seeger | 2 | 2201 |
| | x+34 Shim | Cale | 1 | 10424 |
| | x+35 Roller | Galet | 1 | 10116 |
| | +36 Nut | Ecrou | 1 | 2882 |
| | +37 Shaft | Arbre | 1 | 10257 |
| | +38 Lockwasher | Rondelle freine | 1 | 2879 |
| | +39 Nut | Ecrou | 1 | 2885 |
| | .44 Bolt | Boulon | 1 | 2904 |
| | .45 Hose clamp strap | Etrier | 1 | 11494 |
| | .46 Packing ring | Bourage | 1 | 2133 |





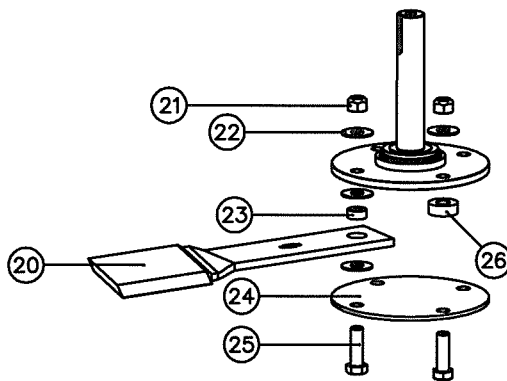
| Det. | Nomenclature | Qty. | ZA-270 No. | ZA-300 No. | ZA-340 No. | ZA-380 No. |
|------|--------------|------|---------------|---------------|---------------|---------------|
|------|--------------|------|---------------|---------------|---------------|---------------|

Swing Arm – Disque mobile

| | | | | | |
|--|---|---------|---------|---------|---------|
| * Brug + mestips – Bar + bladetips – Barren + Messer – Barre + couteaux... | 1 | 4.13086 | 4.13086 | 4.13086 | 4.13086 |
| * 1 Mestip – Bladetip – Messer – Couteau | 2 | 3.13009 | 3.13009 | 3.13009 | 3.13009 |
| * 2 Brug – Bar – Barren – Barre..... | 1 | 3.13011 | 3.13011 | 3.13011 | 3.13011 |
| * 4 Bout – Bolt – Schraube – Boulon | 4 | 3.03133 | 3.03133 | 3.03133 | 3.03133 |
| * 5 Borgmoer – Locknut – Sicherungsmutter – Ecrou freine | 4 | 3.03134 | 3.03134 | 3.03134 | 3.03134 |

Main Mower Frame – Faucheuse principale

| | | | | | |
|--|---|---------|---------|---------|---------|
| * Brug + mestips – Bar + bladetips – Barren + Messer – Barre + couteaux... | 3 | 4.13087 | 4.13088 | - | - |
| * Brug + mestips – Bar + bladetips – Barren + Messer – Barre + couteaux... | 4 | - | - | 4.13087 | 4.13088 |
| * 1 Mestip – Bladetip – Messer – Couteau | 2 | 3.13009 | 3.13009 | 3.13009 | 3.13009 |
| * 2 Brug – Bar – Barren – Barre..... | 1 | 3.13012 | 3.13013 | 3.13012 | 3.13013 |
| * 4 Bout – Bolt – Schraube – Boulon | 4 | 3.03133 | 3.03133 | 3.03133 | 3.03133 |
| * 5 Borgmoer – Locknut – Sicherungsmutter – Ecrou freine | 4 | 3.03134 | 3.03134 | 3.03134 | 3.03134 |

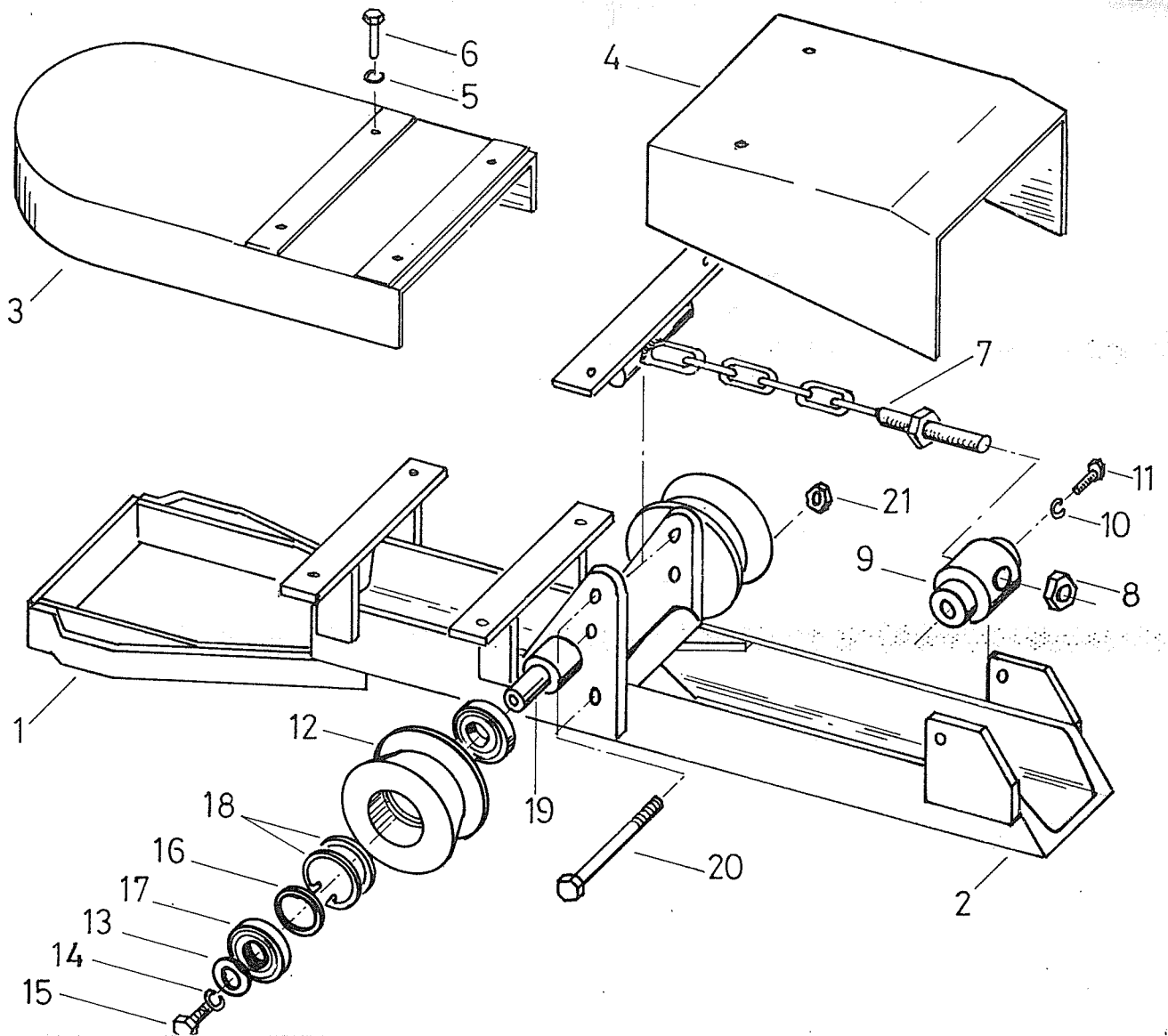


Swing Arm – Disque mobile

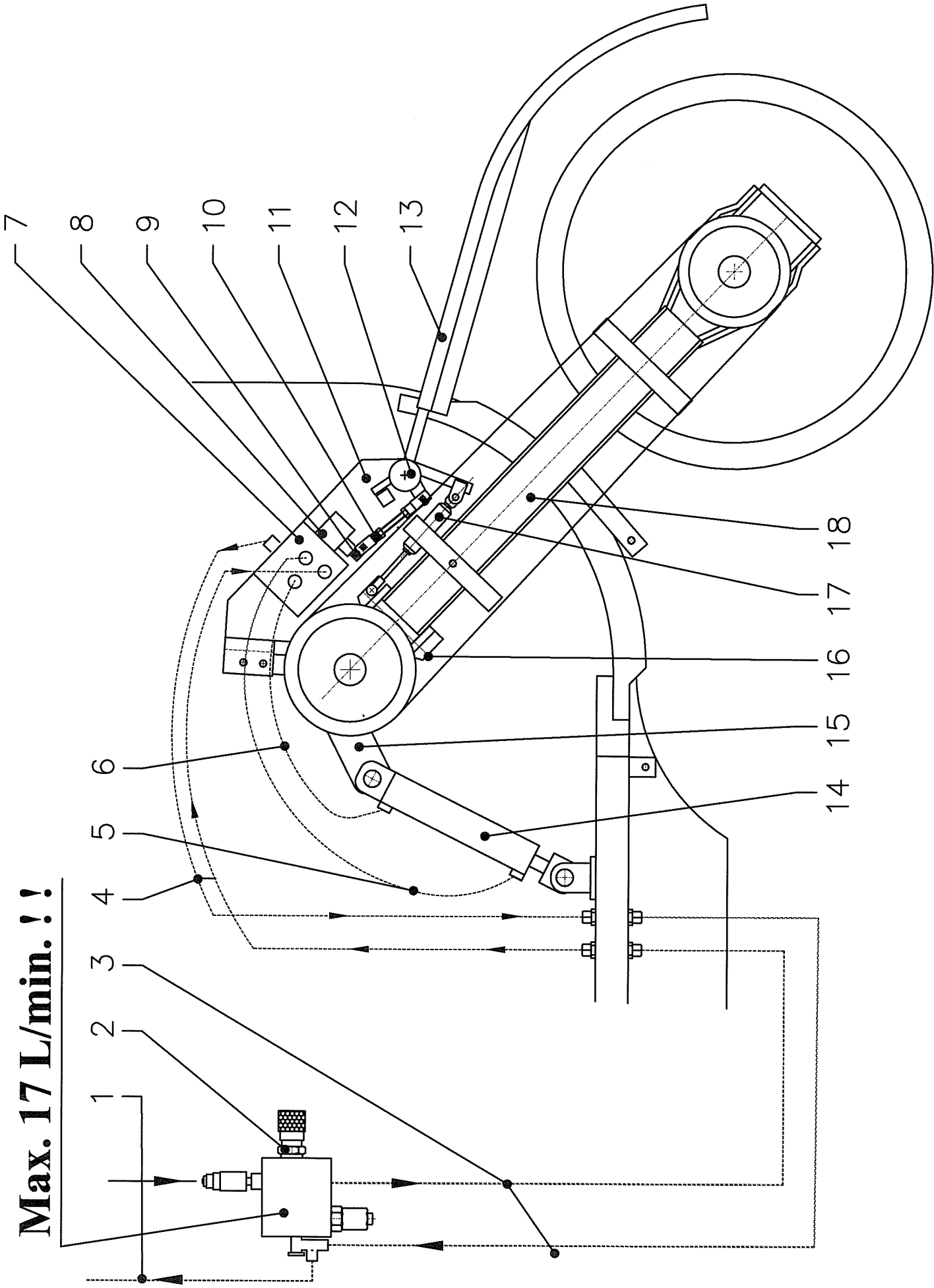
| | | | | | |
|--|---|---------|---------|---------|---------|
| ♦ 20 Slingermes – Swing away blade – Schlagmesser – Couteau oscillant..... | 2 | 3.11430 | 3.11430 | 3.11430 | 3.11430 |
| ♦ 21 Borgmoer – Locknut – Sicherungsmutter – Ecrou freine M16 | 4 | 3.00211 | 3.00211 | 3.00211 | 3.00211 |
| ♦ 22 Schotelveer – Disc spring – Tellerfeder – Rondelle ressort | 8 | 3.02795 | 3.02795 | 3.02795 | 3.02795 |
| ♦ 23 Busje – Bushing – Büchse – Baque..... | 2 | 3.11246 | 3.11246 | 3.11246 | 3.11246 |
| ♦ 24 Schijf – Washer – Scheibe – Rondelle | 1 | 4.11431 | 4.11431 | 4.11431 | 4.11431 |
| ♦ 25 Bout – Bolt – Schraube – Boulon M16x50..... | 4 | 3.03785 | 3.03785 | 3.03785 | 3.03785 |
| ♦ 26 Ring – Washer – Scheibe – Rondelle..... | 2 | 4.13160 | 4.13160 | 4.13160 | 4.13160 |

Main Mower Frame – Faucheuse principale

| | | | | | |
|--|---|---------|---------|---------|---------|
| ♦ 20 Slingermes – Swing away blade – Schlagmesser – Couteau oscillant..... | 6 | 3.11428 | 3.11427 | - | - |
| ♦ Slingermes – Swing away blade – Schlagmesser – Couteau oscillant..... | 8 | - | - | 3.11428 | 3.11430 |
| ♦ 21 Borgmoer – Locknut – Sicherungsmutter – Ecrou freine M16 | 4 | 3.00211 | 3.00211 | 3.00211 | 3.00211 |
| ♦ 22 Schotelveer – Disc spring – Tellerfeder – Rondelle ressort | 8 | 3.02795 | 3.02795 | 3.02795 | 3.02795 |
| ♦ 23 Busje – Bushing – Büchse – Baque..... | 2 | 3.11246 | 3.11246 | 3.11246 | 3.11246 |
| ♦ 24 Schijf – Washer – Scheibe – Rondelle | 1 | 4.11431 | 4.11431 | 4.11431 | 4.11431 |
| ♦ 25 Bout – Bolt – Schraube – Boulon M16x50..... | 4 | 3.03785 | 3.03785 | 3.03785 | 3.03785 |
| ♦ 26 Ring – Washer – Scheibe – Rondelle..... | 2 | 4.13160 | 4.13160 | 4.13160 | 4.13160 |



| Det. | Nomenclature | Qty. | No. |
|------|--|------|-------|
| + | Balk kpl. - Arm cpl. - Arm kpl. - Bras cpl. | 1 | 11728 |
| +1 | Balk opklapbaar - Arm - Arm - Bras | 1 | 11505 |
| +2 | Balk vast - Arm - Arm - Bras | 1 | 11729 |
| +3 | Beschermkap - Cover - Schutzhaube - Chapeau protection | 1 | 11510 |
| +4 | Beschermkap - Cover - Schutzhaube - Chapeau protection | 1 | 11509 |
| +5 | Veerring - Lockwasher - Federring - Rondelle grover | 6 | 257 |
| +6 | Bout - Bolt - Schraube - Boulon | 6 | 777 |
| +7 | Spanner - Chain Strainer - Spanner - Tendeur | 1 | 11730 |
| +8 | Moer - Mutter - Nut - Ecrou | 2 | 193 |
| +9 | As - Shaft - Welle - Arbre | 1 | 11731 |
| +10 | Veerring - Lockwasher - Federring - Rondelle grover | 2 | 259 |
| +11 | Bout - Bolt - Schraube - Boulon | 2 | 787 |
| x | Rol kpl. - Roller cpl. - Rolle kpl. - Rouleau cpl. | 2 | 11732 |
| +x12 | Rol - Roller - Rolle - Rouleau | 2 | 11733 |
| +13 | Ring - Washer - Scheibe - Rondelle | 2 | 2058 |
| +14 | Veerring - Lockwasher - Federring - Rondelle grover | 2 | 259 |
| +15 | Bout - Bolt - Schraube - Boulon | 2 | 953 |
| +x16 | Ring - Washer - Scheibe - Rondelle | 2 | 11734 |
| +x17 | Lager - Bearing - Lager - Roulement | 4 | 1802 |
| +x18 | Seegerring - Snapping - Seegerring - Circlip | 4 | 2649 |
| +19 | As - Shaft - Welle - Arbre | 2 | 11735 |
| +20 | Bout - Bolt - Schraube - Boulon | 2 | 957 |
| +21 | Borgmoer - Locknut - Sicherungsmutter - Ecrou freine | 2 | 210 |



Max. 17 L/min. !!

| Det. | Nomenclature | Qty. | No. |
|------|---|------|----------|
| 1 | Slang – Hose – Schlauch – Tuyau | 1 | 3.073108 |
| 2 | Volume reg. – Flow Controller – Mengeregler – Contôle de Débit | 1 | 3.03462 |
| 2a | Inschroefkoppeling – Stud coupling – Verschraubung – Union male | 2 | 3.02413 |
| 2b | Banjokoppeling – Stud Coupling – Banjo-Verschraubung – Union Banjo | 1 | 3.02529 |
| 2c | T-koppeling – Branche T – T-Schraubung – Coupleur T | 1 | 3.03222 |
| 2d | Inschroefkoppeling – Stud coupling – Verschraubung – Union male | 1 | 3.03170 |
| 2e | Snelkoppelingsstekker – Quick coupling – Schnellkupplungsstecker – Coupleur ½" | 1 | 3.03212 |
| 3 | Slang – Hose – Schlauch – Tuyau | 2 | |
| 4 | Slang – Hose – Schlauch – Tuyau | 2 | |
| 5 | Slang – Hose – Schlauch – Tuyau | 1 | 3.050409 |
| 6 | Slang – Hose – Schlauch – Tuyau | 1 | 3.050407 |
| 7 | Stuurventiel – Hydr. Valve – Steuerventil – Distributeur | 1 | 3.03463 |
| 7a | Banjo-bout – Stud Couplingsbolt – Banjoschraube – Boulon banjo | 4 | 3.03701 |
| 7b | Afdichtingsring – Seal ring – Dichtring – Rondelle | 12 | 3.02015 |
| 7c | Bout – Bolt – Schraube – Boulon M8 x 65 | 3 | 3.02911 |
| 7d | Veerring – Springwasher – Federring – Rondelle d'arrêt M8 | 3 | 3.02876 |
| 8 | Alum. Deksel – Alum. Cover – Alum. Deckel – Couvercle á Alum. | 1 | 3.03622 |
| 9 | Verbindingsbus – Connector – Verbindungsbüchse – Raccord | 1 | 4.15594 |
| 9a | Bout – Bolt – Schraube – Boulon M8 x 16 | 1 | 3.02901 |
| 9b | Veerring – Springwasher – Federring – Rondelle d'arrêt M8 | 1 | 3.02876 |
| | Stelbout – Adjusting Bolt – Stellschraube – Boulon de Réglage kpl. | 1 | 4.14965 |
| 10a | Draadeind – Threaded end – Gewindestange – Embout fileté M8 x 75 ... | 1 | - |
| 10b | Gaffel – Fork – Gabel – Fourche M8 kpl. | 2 | 3.03720 |
| 10c | Moer – Nut – Mutter – Ecrou M8 | 2 | 3.02882 |
| 11 | Plaat – Plate – Platte – Plaque | 1 | 4.14963 |
| 12 | Lagerhuis – Housing – Gehäuse – Boîte | 1 | 4.14964 |
| 12a | Seegerring – Snapping – Seegerring – Circlip ø 17 | 1 | 3.01917 |
| 12b | Deksel – Cover – Deckel – Couvercle | 1 | 4.10258 |
| 12c | Kogellager – Bearing – Lager – Roulement | 2 | 3.01761 |
| 13 | Tasterspriet – Feeler Rod – Tasterarm – Tatonneur | 1 | 4.14410 |
| 13a | Bout – Bolt – Schraube – Boulon M6 x 30 | 1 | 3.02891 |
| 13b | Borgmoer – Locknut – Sicherungsmutter – Ecrou freine M6 | 1 | 3.00207 |
| 14 | Cilinder kpl. – Ram cpl. – Zylinder kpl. – Vérin cpl. | 1 | 3.14390 |
| 14a | Pen – Pin – Bolzen – Cheville | 2 | |
| 14b | Bout – Bolt – Schraube – Boulon M8 x 16 | 2 | 3.02901 |
| 14c | Veerring – Springwasher – Federring – Rondelle d'arrêt M8 | 2 | 3.02876 |
| 15 | Lagerhuis – Housing – Gehäuse – Boîte | 1 | 4.14962 |
| 15a | Spanbus – Bushing – Büchse – Bague 26/20 x 20 | 2 | 3.14960 |
| 16 | Bout – Bolt – Schraube – Boulon M16 x 180 | 1 | 4.13590 |
| 17 | Gasveer – Gas Spring – Gasdämpfer – Ressort á Gaz | 1 | 3.03217 |
| 17a | Kogelkop – Swivel Head – Kugelgelenk – Joint à billes | 1 | 3.03621 |
| 17b | Montageblokje – Mounting Strip – Montage-Ende fest – bloque de montage fix | 1 | 3.03779 |
| 18 | Zwenkerbalk – Swingarm – Schwenkscheibe-Arm – Bras | 1 | 4.14961 |

